

WAAS CH 45809 W31A	APP CRS 313°	Rwy Idg 6500 TDZE 1070 Apt Elev 1095
--	------------------------	---

RNAV (GPS) RWY 31
HOUGHTON COUNTY MEMORIAL (CMX)

RNP APCH.

T Inop table does not apply to LNAV Cat D. For uncompensated Baro-VNAV systems, LNAV/VNAV NA below -17°C or above 46°C. For inop ALS, increase LPV visibility all Cats to 1 SM, increase LNAV/VNAV Cat D visibility to 1 SM.

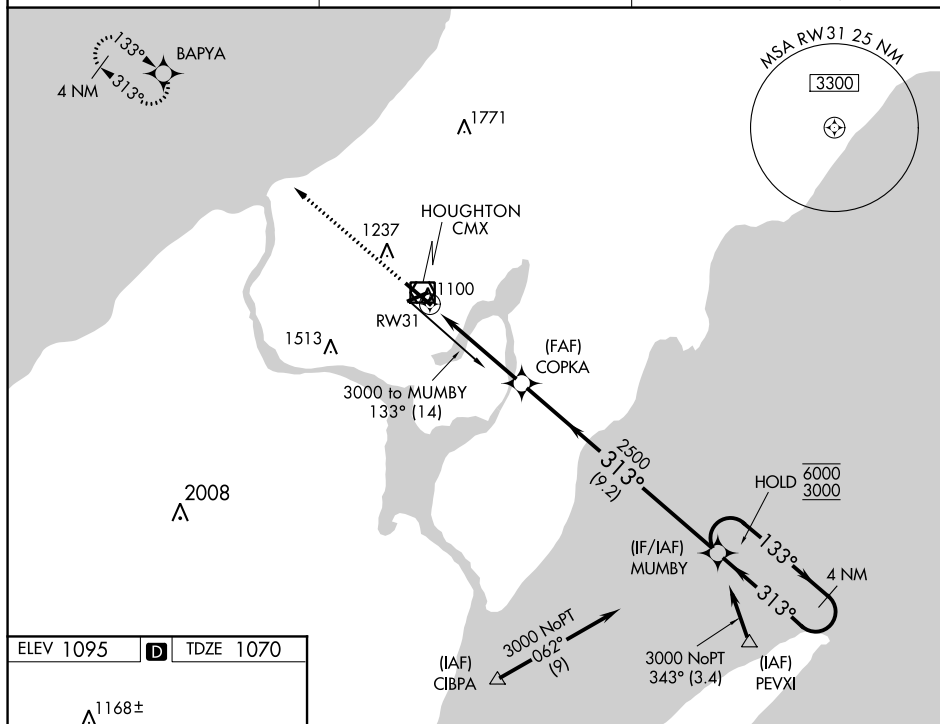
MALSR



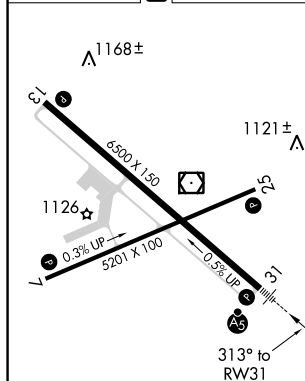
MISSED APPROACH:
Climb to 3700 direct
BAPYA and hold.

ASOS
125.675

MINNEAPOLIS CENTER
133.55 379.1

UNICOM
122.7 (CTAF) 

ELEV 1095	D	TDZE 1070
-----------	----------	-----------



MIRL Rwy 7-25 **L**
REIL Rwy 7, 13 and 25 **L**
HIRL Rwy 13-31 **L**

Diagram illustrating the MUMBY Holding Pattern. The pattern is a racetrack shape with a 4 NM width. The inbound leg is 3.00 NM, and the outbound leg is 3.00 NM. The holding pattern is oriented 133°/313°. The pattern is located 9.2 NM from the MUMBY VORTAC, 3.4 NM from the COPKA VORTAC, and 0.9 NM from the RW31 runway. The diagram also shows the BAPYA VORTAC and the 3700 MSL elevation. The holding pattern is at 4700 MSL, with a TCH of 47. The diagram includes a scale bar and a north arrow.