

WAAS CH <b>58233</b> <b>W07A</b>	APP CRS <b>069°</b>	Rwy Idg TDZE Apt Elev	<b>5201</b> <b>1067</b> <b>1095</b>
--	------------------------	-----------------------------	---

RNAV (GPS) RWY 7

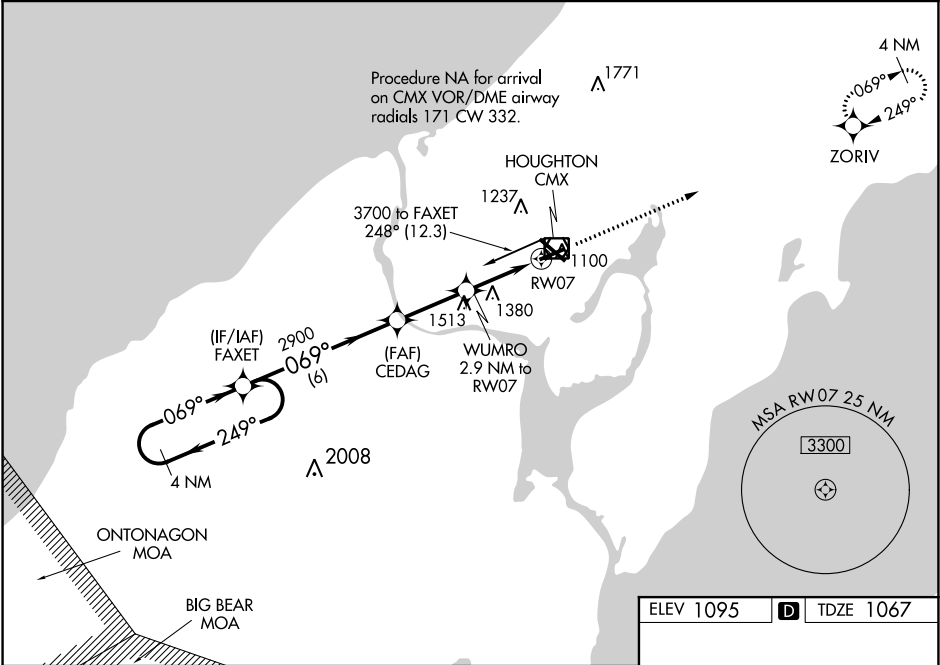
HOUGHTON COUNTY MEMORIAL (CMX)

⚠

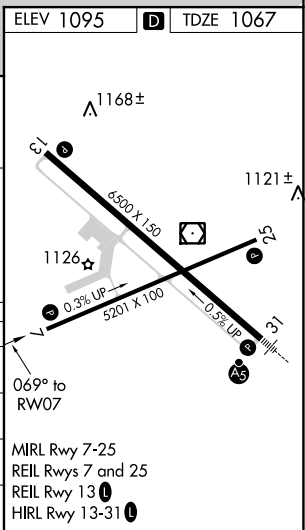
For uncompensated Baro-VNAV systems, LNAV/VNAV NA below -20°C (-4°F) or above 54°C (130°F).  
DME/DME RNP-0.3 NA.  
Rwy 7 helicopter visibility reduction below ¾ SM NA.

MISSED APPROACH: Climb to 3700 direct ZORIV and hold.

ASOS <b>125.675</b>	MINNEAPOLIS CENTER <b>133.55 379.1</b>	UNICOM <b>122.7 (CTAF) 0</b>
------------------------	---	---------------------------------



4 NM Holding Pattern		VGSI and RNAV glidepath not coincident (VGSI Angle 3.00/TCH 30).		3700 ZORIV	
3700 ← 249° 069° →		CEDAG 2900		*LNAV only	
GP 3.00° TCH 55		*2020		*1.7 NM to RW07	
		6 NM		2.7 NM	
		1.2 NM		1.7	
CATEGORY	A	B	C	D	
LPV DA	1431-1¼		364 (400-1¼)		
LNAV/ VNAV DA	1598-1¾		531 (600-1¾)		
LNAV MDA	1640-1	573 (600-1)	1640-1¾	573 (600-1¾)	
CIRCLING	1640-1	545 (600-1)	1680-1¾ 585 (600-1¾)	1820-2¼ 725 (800-2¼)	



EC-1, 03 DEC 2020 to 31 DEC 2020

EC-1, 03 DEC 2020 to 31 DEC 2020