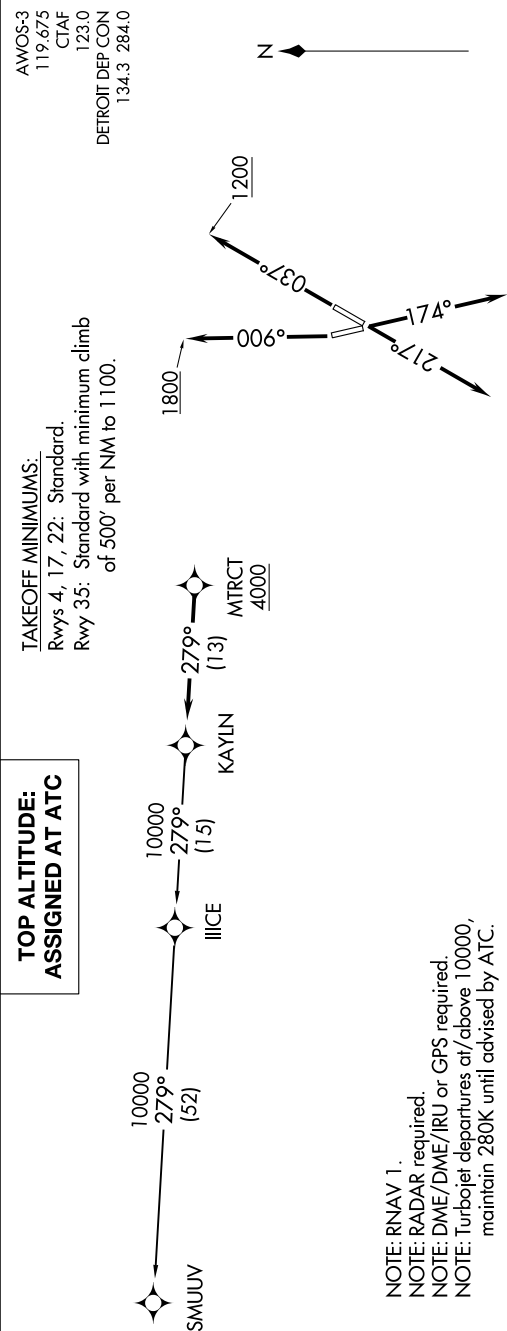


(KAYLN2.KAYLN) 19227  
KAYLN TWO DEPARTURE (RNAV)

AL-940 (FAA)

GROSSE ILE MUNI (0N7Z)  
DETROIT/GROSSE ILE, MICHIGAN



DEPARTURE ROUTE DESCRIPTION

- TAKEOFF RUNWAY 4:** Climb on heading 037° to 1200 then as assigned for RADAR vectors to cross MTRCT at or above 4000, thence....
- TAKEOFF RUNWAY 17:** Climb on heading 174° or as assigned for RADAR vectors to cross MTRCT at or above 4000, thence....
- TAKEOFF RUNWAY 22:** Climb on heading 217° or as assigned for RADAR vectors to cross MTRCT at or above 4000, thence....
- TAKEOFF RUNWAY 35:** Climb on heading 006° to 1800 then as assigned for RADAR vectors to cross MTRCT at or above 4000, thence....
- ....on track 279° to KAYLN, then on (transition). Maintain ATC assigned altitude, expect filed altitude 10 minutes after departure.
- SMUUV TRANSITION (KAYLN2.SMUUV):**

KAYLN TWO DEPARTURE (RNAV)  
(KAYLN2.KAYLN) 15AUG19

DETROIT/GROSSE ILE, MICHIGAN  
GROSSE ILE MUNI (0N7Z)