

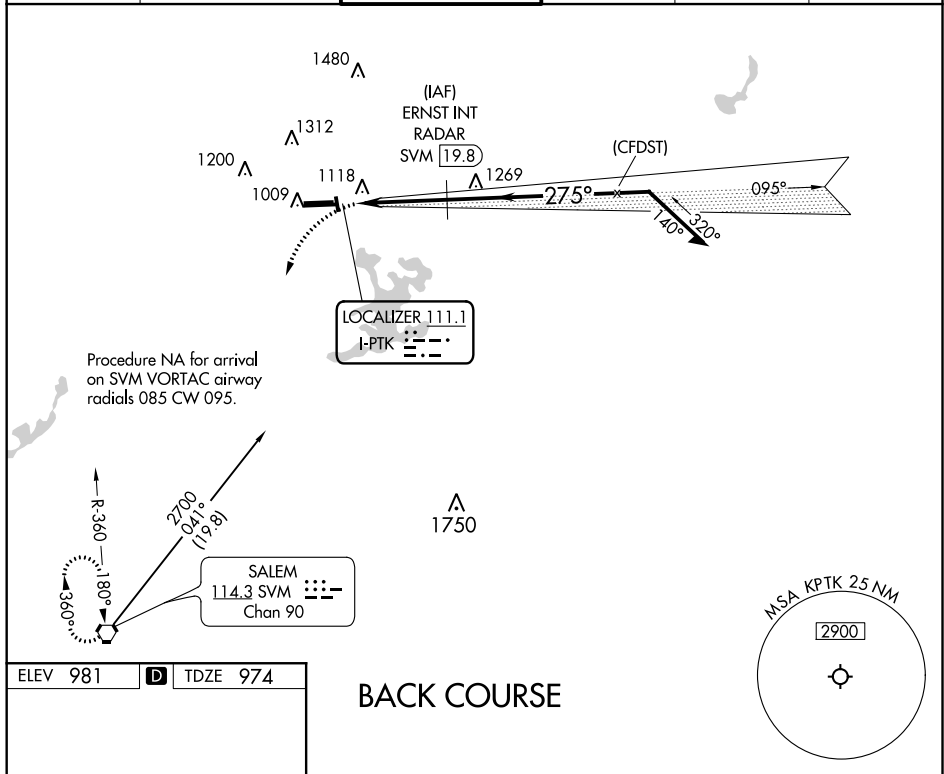
LOC I-PTK <b><u>111.1</u></b>	APP CRS <b>275°</b>	Rwy Idg <b>6520</b> TDZE <b>974</b> Apt Elev <b>981</b>
----------------------------------	------------------------	---

LOC BC RWY 27L  
OAKLAND COUNTY INTL (PTK)

**V**  
**A** Circling Rwy 9L, 36 NA at night. When local altimeter setting not received, use Coleman A Young Muni altimeter setting and increase all MDA 120 feet, increase S-27L Cat C/D visibility  $\frac{3}{8}$  SM and Circling Cat C/D visibility  $\frac{1}{2}$  SM.

**MISSED APPROACH:**  
Climbing left turn to 3000 direct  
SVM VORTAC and hold.

ATIS <b>125.025</b>	DETROIT APP CON <b>132.35 284.0</b>	PONTIAC TOWER★ <b>120.5 (CTAF) 0</b>	GND CON <b>121.9</b>	CLNC DEL <b>118.25</b>	UNICOM <b>122.95</b>
------------------------	--	---	-------------------------	---------------------------	-------------------------



**HIRL Rwy 9R-27L**

**MIRL Rwy 9L-27R**

**REIL Rwy 27L**

**REIL Rwys 9L and 27R**

**FAF to MAP 3.3 NM**

Knots	60	90	120	150	180
Min:Sec	3:18	2:12	1:39	1:19	1:06

**CIRCLING**

**SVM**

**ERNST INT RADAR**

**I-PTK**

**Disregard GS indications.**

**0.7**

**3.3 NM**

CATEGORY	A	B	C	D
S-LOC 27L	1440-1	466 (500-1)	1440-1 <sup>3</sup> / <sub>8</sub>	466 (500-1 <sup>3</sup> / <sub>8</sub> )
<b>CIRCLING</b>	1500-1 519 (600-1)	1540-1 559 (600-1)	1640-1 <sup>3</sup> / <sub>4</sub> 659 (700-1 <sup>3</sup> / <sub>4</sub> )	1640-2 659 (700-2)