

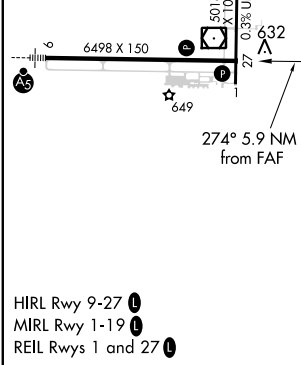
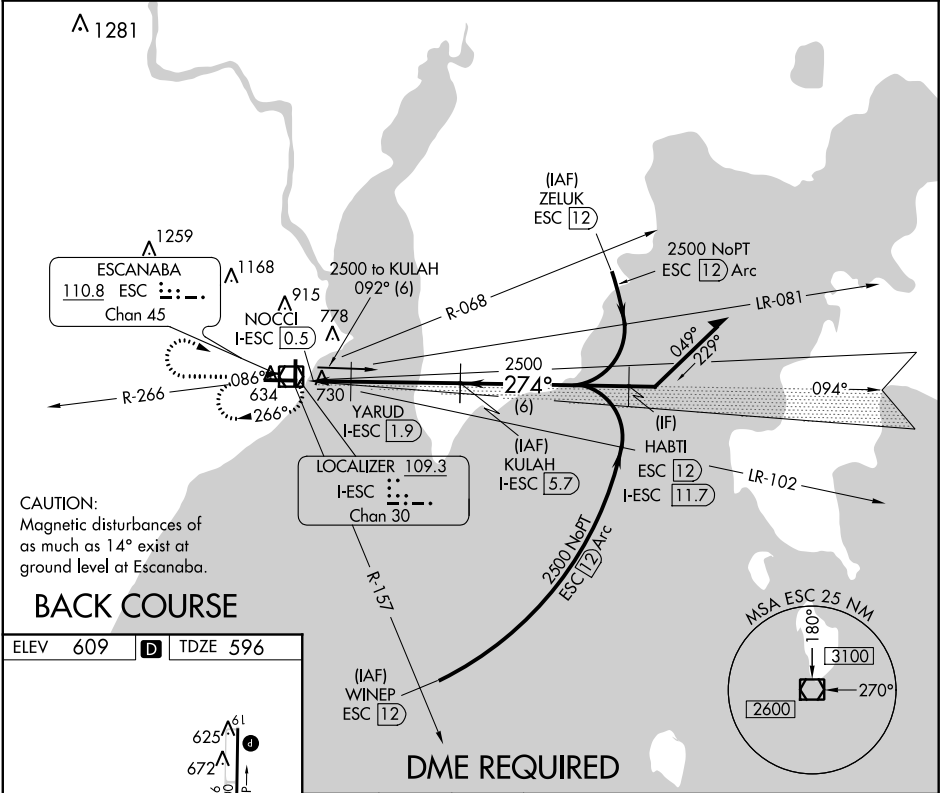
LOC/DME I-ESC 109.3 Chan 30	APP CRS 274°	Rwy Idg TDZE Apt Elev	6498 596 609
--	------------------------	-----------------------------	---

LOC/DME BC RWY 27
DELTA COUNTY (ESC)

⚠ Rwy 27 Straight-In and Circling and Circling to Rwy 19 NA at night. Helicopter visibility reduction below 1 SM NA. When local altimeter setting not received, use Marquette altimeter setting and increase all MDA 180 feet and S-27 Cat C and D visibility 3/8 mile and Circling Cat C visibility 1/2 mile and Cat D visibility 1/4 mile.

MISSED APPROACH: Climb to 2500 then right turn direct ESC VOR/DME and hold.

AWOS-3PT 121.425	MINNEAPOLIS CENTER 127.65	UNICOM 122.8 (CTAF) 0
----------------------------	-------------------------------------	---------------------------------



DME REQUIRED			
2500	ESC	KULAH I-ESC 5.7	Remain within 10 NM
ESC VOR/DME	YARUD I-ESC 1.9	2500	274°
NOCCI I-ESC 0.5	274°	2500	274°
I-ESC	1280	2.98°	Disregard glide slope indications. Use I-ESC DME when on the localizer course.
0.7	1.3 NM	3.9 NM	
CATEGORY	A	B	C
S-27	1040-1	444 (500-1)	1040-1 3/8 444 (500-1 3/8)
CIRCLING	1060-1	1080-1	1280-2
	451 (500-1)	471 (500-1)	671 (700-2)
			1480-2 3/4
			871 (900-2 3/4)

EC-1, 03 DEC 2020 to 31 DEC 2020

EC-1, 03 DEC 2020 to 31 DEC 2020