

WAAS CH 69333 W01A	APP CRS 004°	Rwy Idg TDZE Apt Elev	5016 600 609
--	------------------------	-----------------------------	---

RNAV (GPS) RWY 1

▼ Rwy 1 helicopter visibility reduction below 1 SM NA. DME/DME RNP-0.3 NA.
▲ Straight-in Rwy 1 NA at night, Circling Rwy 1, 19 NA at night. When local
 altimeter setting not received, use Marquette altimeter setting and increase all
 MDA 180 feet and increase LP Cat C and D visibility $\frac{1}{2}$ SM, LNAV Cat C and D
 visibility $\frac{3}{8}$ SM, and Circling Cat C visibility $\frac{1}{2}$ SM and Cat D visibility $\frac{1}{4}$ SM.

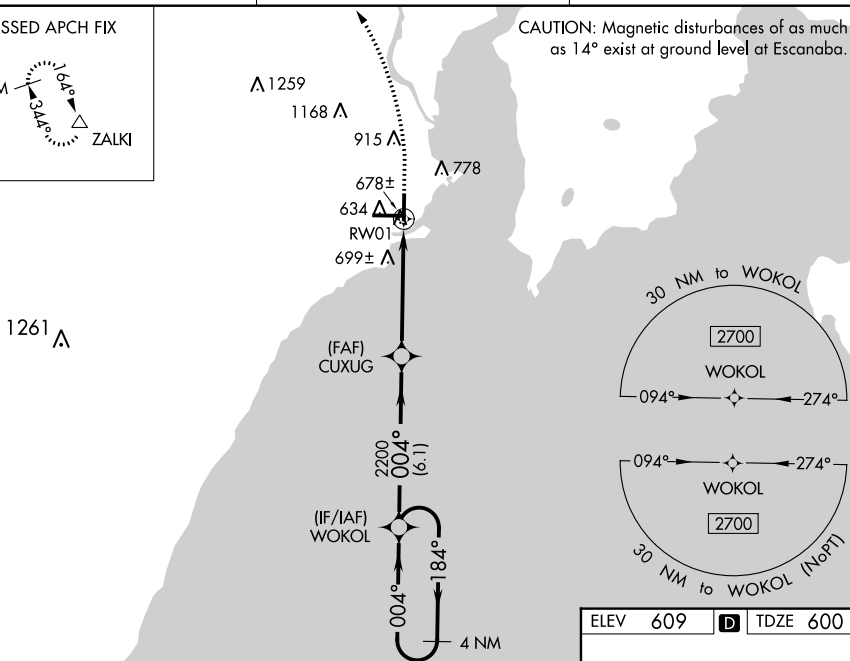
MISSED APPROACH:
Climb to 1100, then
climbing left turn to 2800
direct ZALKJ and hold.

AWOS-3PT 121.425	MINNEAPOLIS CENTER 127.65	UNICOM 122.8 (CTAF) 0
----------------------------	-------------------------------------	---------------------------------

MISSED APCH FIX



CAUTION: Magnetic disturbances of as much as 14° exist at ground level at Escanaba.



4 NM Holding Pattern WOKOL

VGSi and descent angles not coincident (VGSi angle 3.00/TCH 27).

1100 ↑	2800 ↘	ZALKI △
-----------	-----------	------------

2700 ← 18.4°
004° →

004°

CUXUG

2200

3.00°
TCH 45

RW01

6.1 NM

4.9 NM

CATEGORY	A	B	C	D
LP MDA		940-1	340 (400-1)	
LNAV MDA		960-1	360 (400-1)	
C CIRCLING	1060-1 451 (500-1)	1080-1 471 (500-1)	1280-2 671 (700-2)	1480-2 ³ / ₄ 871 (900-2 ³ / ₄)

