

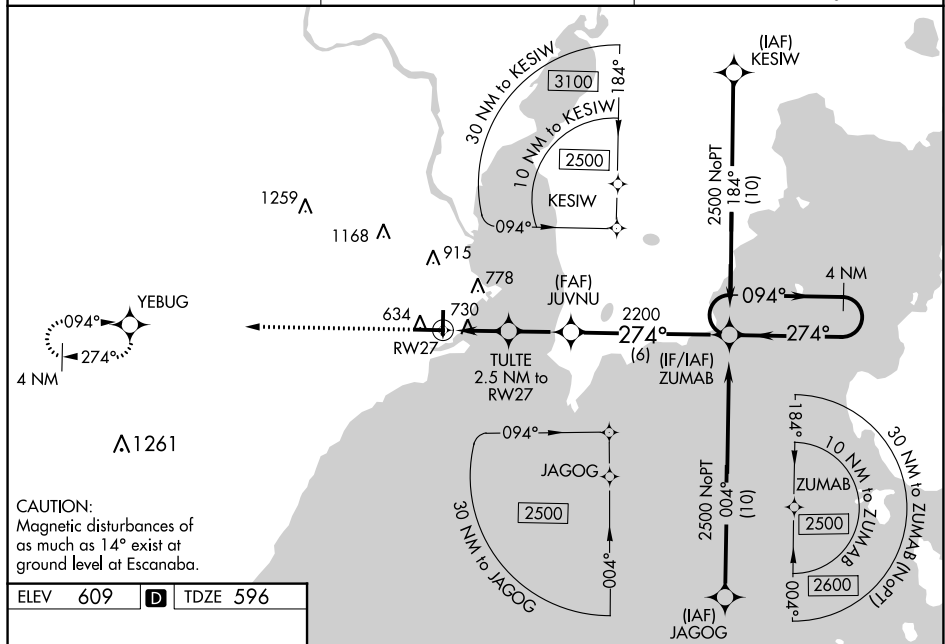
WAAS CH 63128 W27A	APP CRS 274°	Rwy Idg 6498 TDZE 596 Apt Elev 609
--	------------------------	---

RNAV (GPS) RWY 27
DELTA COUNTY (ESC)

⚠ Baro-VNAV NA when using Marquette altimeter setting. For uncompensated Baro-VNAV systems, LNAV/VNAV NA below -16°C (4°F) or above 54°C (130°F). Rwy 27 Straight-in and Circling and Circling to Rwy 19 NA at night. DME/DME RNP-0.3 NA. Helicopter visibility reduction below 1 SM NA. When local altimeter setting not received, use Marquette altimeter setting and increase all DA 178 feet and all MDA 180 feet and increase LPV all Cats visibility ⅓ mile, LNAV/VNAV all Cats visibility ⅓ mile, LNAV Cat C and D visibility ⅓ mile, and Circling Cat C visibility ½ mile and Cat D visibility ¼ mile.

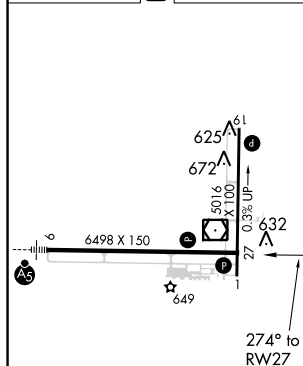
MISSED APPROACH:
Climb to 2500 direct
YEBUG and hold.

AWOS-3PT 121.425	MINNEAPOLIS CENTER 127.65	UNICOM 122.8 (CTAF) L
----------------------------	-------------------------------------	---------------------------------



CAUTION:
Magnetic disturbances of
as much as 14° exist at
ground level at Escanaba.

ELEV	609	D	TDZE	596
------	-----	----------	------	-----



HIRL Rwy 9-27 **L**
MIRL Rwy 1-19 **L**
REIL Rwy 1 and 27 **L**

***RNAV only.**

YEBUG

ZUMAB

JUVNU

TULTE
2.5 NM to RW27

RW27

Holding Pattern
4 NM

**GP 3.00°
TCH 53**

Altitudes: 2200, 1440, 2500

Angles: 274°, 094°, 274°

Distances: 2.5 NM, 2.4 NM, 6 NM

CATEGORY	A	B	C	D
LPV DA	846-1 250 (300-1)			
RNAV/VNAV DA	1076-1½ 480 (500-1½)			
RNAV MDA	1040-1	444 (500-1)	1040-1¾	444 (500-1¾)
CIRCLING	1060-1 451 (500-1)	1080-1 471 (500-1)	1280-2 671 (700-2)	1480-2¾ 871 (900-2¾)

RNAV (GPS) RWY 27