

VOR/DME	ESC	APP CRS	Rwy Idg	5016
110.8		351°	TDZE	600
Chan 45			Apt Elev	609

VOR RWY 1

DELTA COUNTY (ESC)

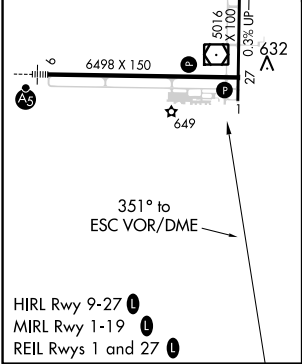
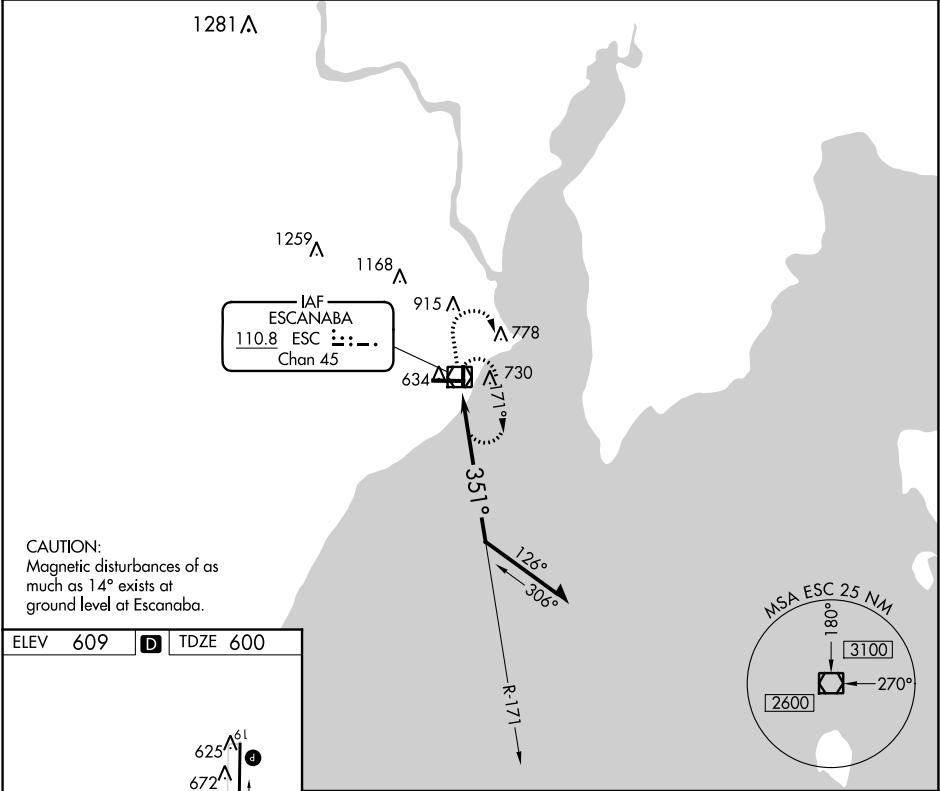
▼

▲

Straight-in Rwy 1 NA at night, Circling Rwy 1, 19 NA at night. Rwy 1 helicopter visibility reduction below 1 SM NA. When local altimeter setting not received, use Marquette altimeter setting and increase all MDA 180 feet and increase S-01 Cat C and D visibility ½ SM, Circling Cat C visibility ½ SM and Cat D visibility ¼ SM.

MISSED APPROACH: Climb to 2400 then right turn direct ESC VOR/DME and hold.

AWOS-3PT 121.425	MINNEAPOLIS CENTER 127.65	UNICOM 122.8 (CTAF) 0
---------------------	------------------------------	--------------------------



2400	ESC	ESC VOR/DME	Remain within 10 NM
171°	351°	2200	
CATEGORY			
A		B	
S-1		1080-1 480 (500-1)	
CIRCLING		1080-1 471 (500-1)	
C		D	
1080-1 480 (500-1)		1080-1 471 (500-1)	
1280-2 671 (700-2)		1480-2 871 (900-2)	