

APP CRS
214°

Rwy Idg
TDZE
Apt Elev

5999
625
625

RNAV (GPS) RWY 21
MENOMINEE RGNL (MNM)

RNP APCH.

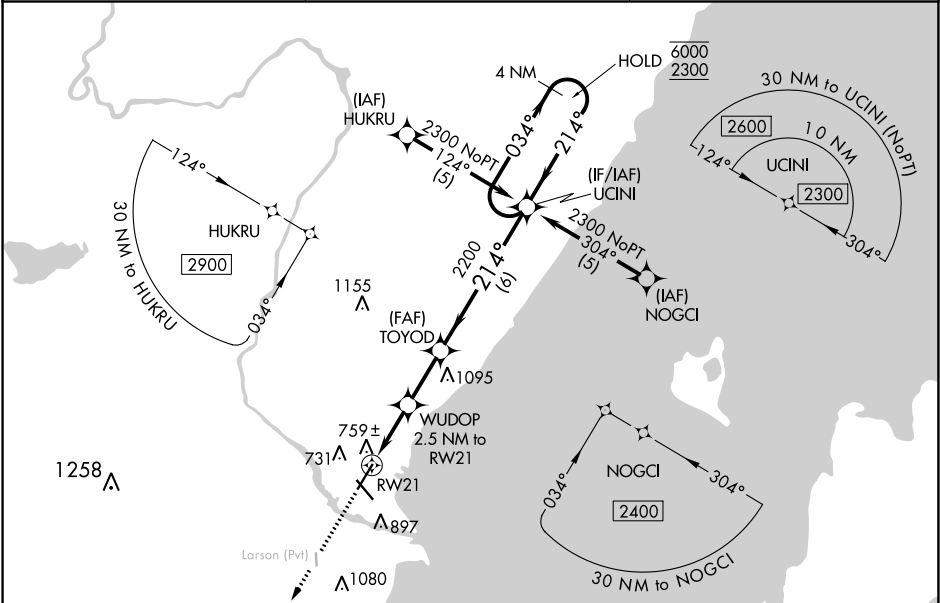
▼

⚠

Circling Rwy 14, 32 NA at night. Rwy 21 helicopter visibility reduction below ¾ SM NA. VDP NA when using Sturgeon Bay altimeter setting. When local altimeter setting not received, use Sturgeon Bay altimeter setting and increase all MDA 60 feet, increase LNAV Cat C/D and Circling Cat C/D visibility ¼ SM.

MISSED APPROACH:
Climb to 2200 direct OMUPE and hold.

AWOS-3PT 109.6	GREEN BAY APP CON ★ 120.3 338.2	UNICOM 122.8 (CTAF) 0
--------------------------	---	---------------------------------



ELEV 625

TDZE 625

MIRL Rwy 14-32 1

HIRL Rwy 3-21 1

MISSED APCH FIX
OMUPE

2200 OMUPE

4 NM Holding Pattern

UCINI

WUDOP 2.5 NM to RW21

TOYOD

1.1 NM to RW21

1.4

2.3 NM

6 NM

CATEGORY	A	B	C	D
LNAV MDA	1020-1	395 (400-1)	1020-1½	395 (400-1½)
CIRCLING	1200-1	575 (600-1)	1200-1½	1380-2½