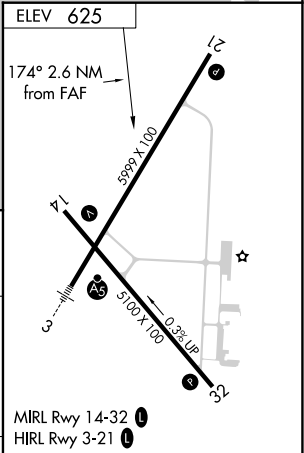
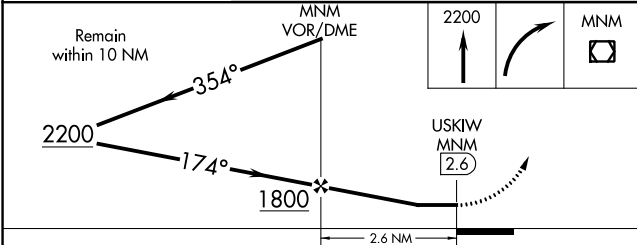
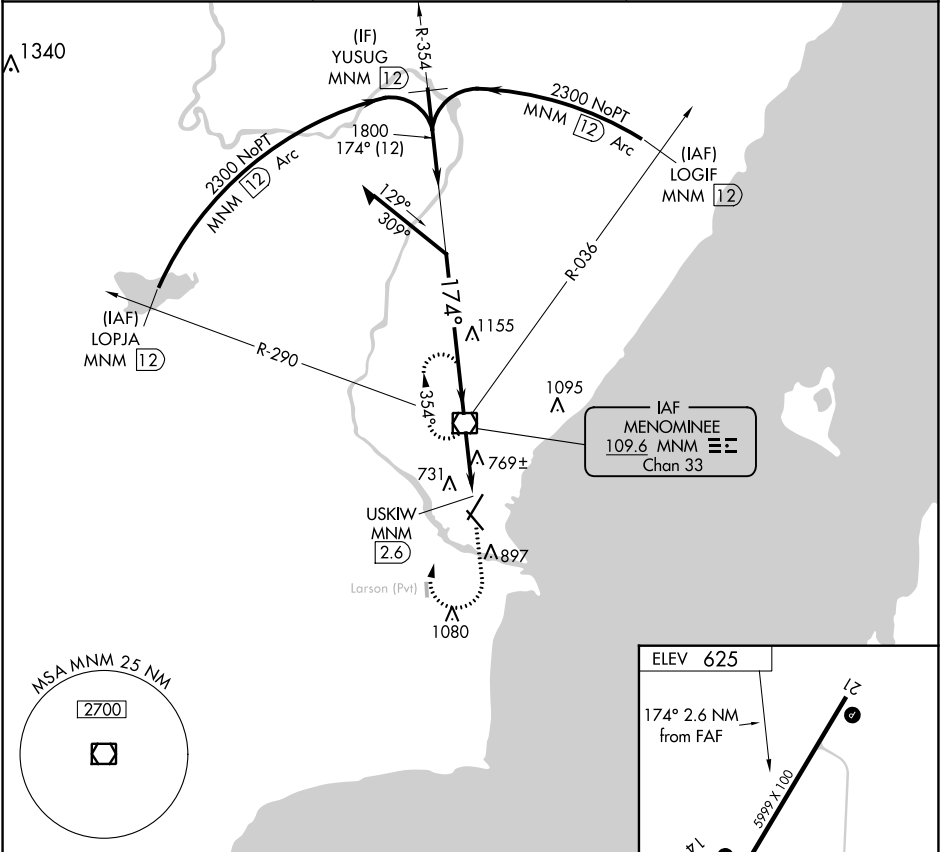


VOR/DME MNM 109.6 Chan 33	APP CRS 174°	Rwy Idg TDZE Apt Elev 625	N/A N/A
---	------------------------	---	--------------------------

VOR-A
MENOMINEE RGNL (MNM)

<p>⚠ Circling Rwy 14, 32 NA at night. When local altimeter setting not received, use Sturgeon Bay altimeter setting and increase all MDA 60 feet, increase Circling Cat C/D visibility ¼ mile.</p>	<p>MISSED APPROACH: Climb to 2200 then right turn direct MNM VOR/DME and hold.</p>
---	--

AWOS-3PT 109.6	GREEN BAY APP CON★ 120.3 338.2	UNICOM 122.8 (CTAF) ①
--------------------------	--	---------------------------------



CATEGORY	A	B	C	D	FAF to MAP 2.6 NM					
Ⓢ CIRCLING	1200-1	575 (600-1)	1200-1½ 575 (600-1½)	1380-2½ 755 (800-2½)	Knots	60	90	120	150	180
					Min:Sec	2:36	1:44	1:18	1:02	0:52