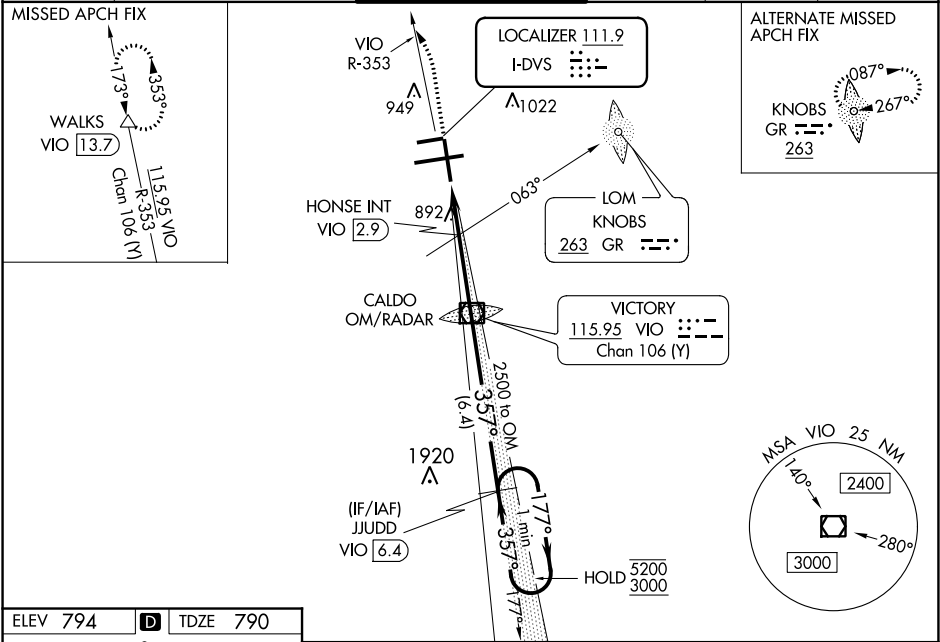


LOC I-DVS <b>111.9</b>	APP CRS <b>357°</b>	Rwy Idg TDZE Apt Elev <b>8501</b> <b>790</b> <b>794</b>
---------------------------	------------------------	--

ILS or LOC RWY 35  
GERALD R FORD INTL (G.R.R.)

DME required. DME or RADAR required for procedure entry.	MALSR	MISSED APPROACH: Climb to 1300 then climbing left turn to 3000 on VIO VOR/DME R-353 to WALKS 13.7 DME and hold.
HONSE fix minimums: for inop ALS, increase Cat C and D visibility to RVR 6000. ASR ** RVR 1800 authorized with use of FD or AP or HUD to DA.		

ATIS <b>118.725</b>	GREAT LAKES APP CON ★ <b>128.4 257.6</b>	GRAND RAPIDS TOWER ★ <b>135.65 (CTAF) 0 339.8</b>	GND CON <b>121.8</b>	CLNC DEL <b>119.3</b>	UNICOM <b>122.95</b>
------------------------	---	--	-------------------------	--------------------------	-------------------------



ELEV 794	D	TDZE 790
MIRL Rwy 8L-26R	REIL Rws 8L, 17 and 26R	HIRL Rws 8R-26L and 17-35
FAF to MAP 4.9 NM		
Knots	60	90 120 150 180
Min:Sec	4:54	3:16 2:27 1:58 1:38

1300	3000	WALKS	VGSI and ILS glidepath not coincident (VGSI Angle 3.00/TCH 74).	One Minute Holding Pattern
VIO R-353	VIO 4.9	HONSE INT VIO 2.9	VIO VOR/DME CALDO OM/RADAR	JJUDD VIO 6.4
*LOC only.	*VIO 3.8	*1480	2412	177° → 5200
1.1 NM	0.9 NM	2.9 NM	6.4 NM	357° ← 3000
CATEGORY	A	B	C	D
S-ILS 35**	990/24 200 (200-½)			
S-LOC 35	1480/24	690 (700-½)	1480-1½	690 (700-1½)
CIRCLING	1480-1	686 (700-1)	1480-2 686 (700-2)	1480-2¼ 686 (700-2¼)
HONSE MINIMUMS (ADF OR DME REQUIRED)				
S-LOC 35	1200/24	410 (500-½)	1200/40	410 (500-¾)
CIRCLING	1260-1	466 (500-1)	1340-1½ 546 (600-1½)	1360-2 566 (600-2)

EC-1, 03 DEC 2020 to 31 DEC 2020

EC-1, 03 DEC 2020 to 31 DEC 2020