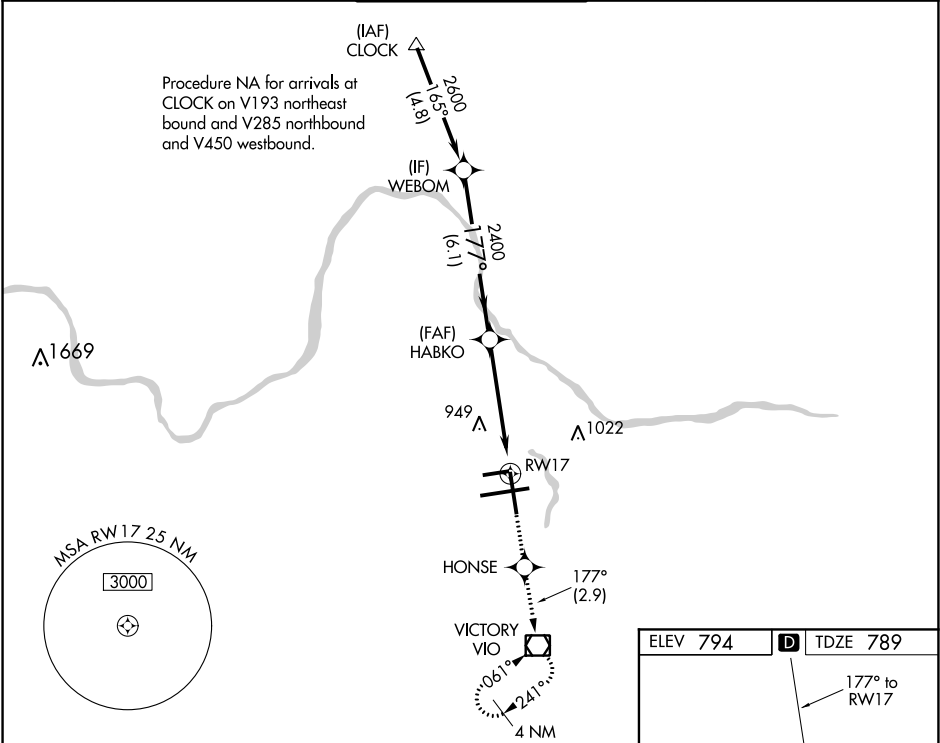


WAAS CH 93912 W17A	APP CRS 177°	Rwy Idg 8501 TDZE 789 Apt Elev 794	RNAV (GPS) RWY 17 GERALD R FORD INTL (G.R.R.)
--	------------------------	---	---

ASR	For uncompensated Baro-VNAV systems, LNAV/VNAV NA below -16°C (4°F) or above 54°C (130°F). Rwy 17 helicopter visibility reduction below ¾ SM NA. DME/DME RNP-0.3 NA.	MISSED APPROACH: Climb to 3000 direct HONSE and on track 177° to VJO VOR/DME and hold, continue climb-in-hold to 3000.
-----	--	--

ATIS 118.725	GREAT LAKES APP CON ★ 128.4 257.6	GRAND RAPIDS TOWER ★ 135.65 (CTAF) 339.8	GND CON 121.8	CLNC DEL 119.3	UNICOM 122.95
------------------------	---	--	-------------------------	--------------------------	-------------------------



VGSI and RNAV glidepath not coincident (VGSI Angle 3.00/TCH 50).		3000	HONSE	tr 177°	VIO
2600		HABKO	2400	*1.2 NM to RWY17	
GP 3.00° TCH 50		2400	RWY17		
6.1 NM		3.7 NM	1.2		
CATEGORY	A	B	C	D	
LPV DA	1108-1		319 (400-1)		
LNAV/VNAV DA	1259-1¾		470 (500-1¾)		
LNAV MDA	1200-1	411 (500-1)	1200-1¼	411 (500-1¼)	
CIRCLING	1260-1	466 (500-1)	1340-1½	546 (600-1½)	1360-2 566 (600-2)

