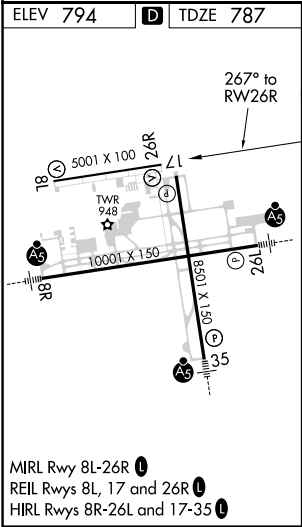
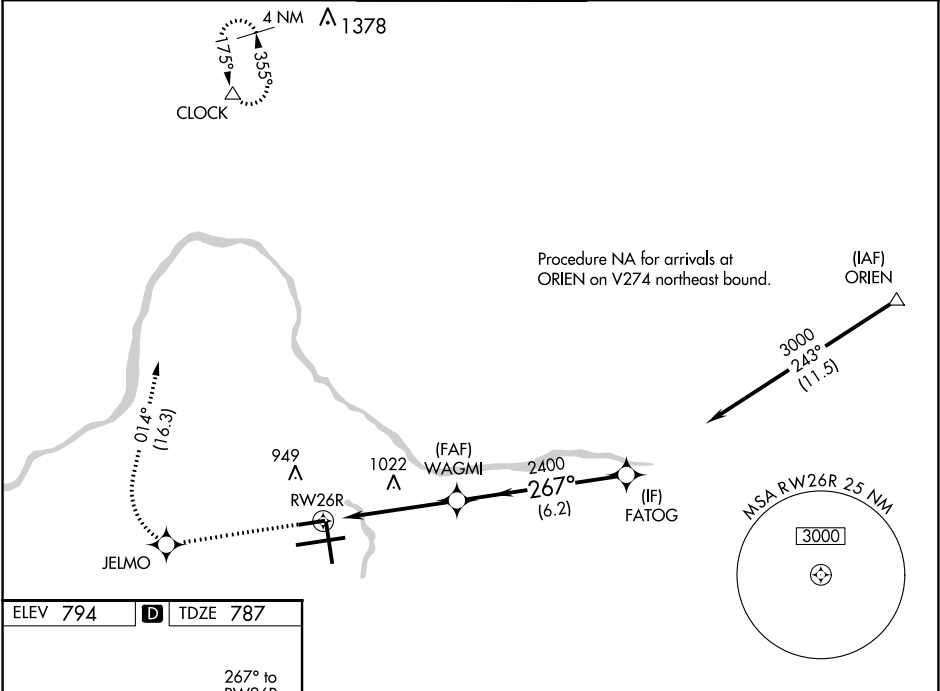





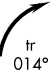
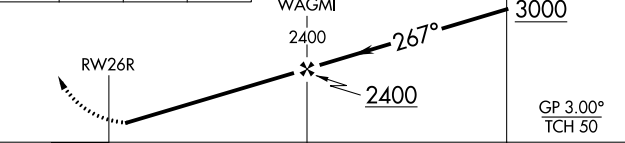

WAAS CH 82413 W26A	APP CRS 267°	Rwy Idg 5001 TDZE 787 Apt Elev 794
--	------------------------	---

RNAV (GPS) RWY 26R

GERALD R FORD INTL (G.R.R.)

RNP APCH.		MISSED APPROACH: Climb to 3000 direct JELMO and right turn on track 014° to CLOCK and hold.			
ASR For uncompensated Baro-VNAV systems, LNAV/VNAV NA below -16°C or above 47°C. Rwy 26R helicopter visibility reduction below 1 SM NA.					
ATIS 118.725	GREAT LAKES APP CON ★ 128.4 257.6	GRAND RAPIDS TOWER★ 135.65 (CTAF) 339.8	GND CON 121.8	CLNC DEL 119.3	UNICOM 122.95



3000	JELMO	CLOCK	VGSI and RNAV glidepath not coincident (VGSI Angle 3.00/TCH 33).	
				
	 tr 014°			
				
CATEGORY	A	B	C	D
LPV DA	1037-1 250 (300-1)			
LNAV/ VNAV DA	1216-1½ 429 (500-1½)			
LNAV MDA	1280-1	493 (500-1)	1280-1½ 493 (500-1½)	1280-1½ 493 (500-1½)
 CIRCLING	1280-1	486 (500-1)	1340-1½ 546 (600-1½)	1360-2 566 (600-2)