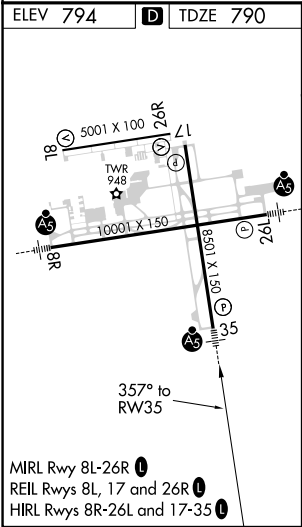
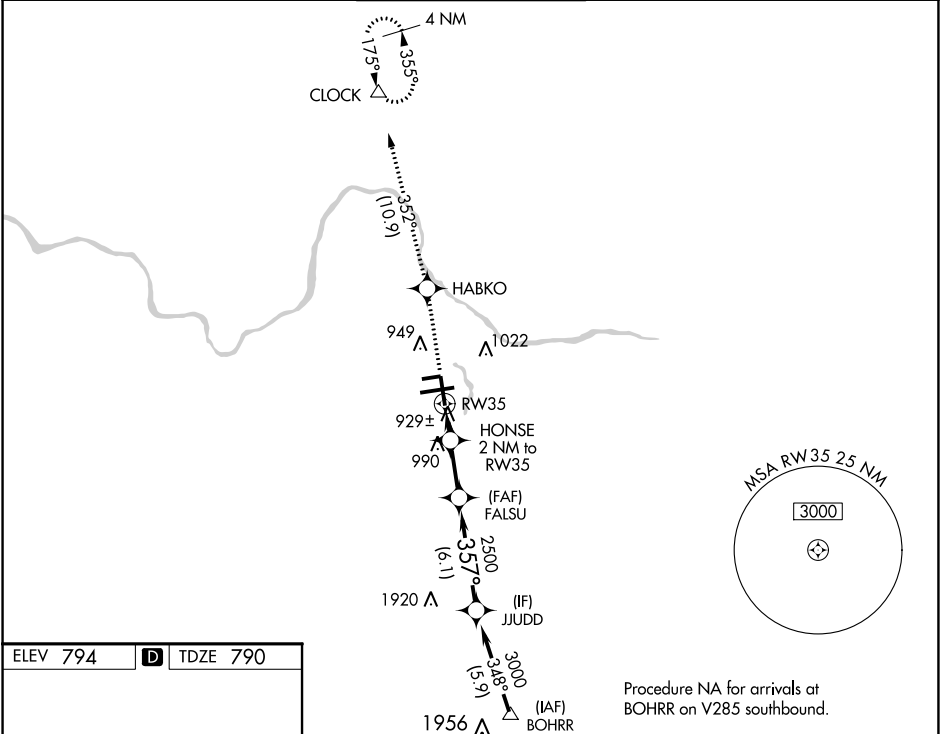


WAAS CH 87112 W35A	APP CRS 357°	Rwy Idg 8501 TDZE 790 Apt Elev 794	RNAV (GPS) RWY 35 GERALD R FORD INTL (G.R.R.)			
RNP APCH.			MALSR	MISSED APPROACH: Climb to 3000 direct HABKO and track 352° to CLOCK and hold.		
ASR For uncompensated Baro-VNAV systems, LNAV/VNAV NA below -16°C or above 54°C. For inop ALS, increase LNAV Cat D visibility to RVR 6000. ** RVR 1800 authorized with use of FD or AP or HUD to DA.			AS			
ATIS 118.725	GREAT LAKES APP CON ★ 128.4 257.6		GRAND RAPIDS TOWER ★ 135.65 (CTAF) 0 339.8	GND CON 121.8	CLNC DEL 119.3	UNICOM 122.95



ELEV 794		D	TDZE 790		Procedure NA for arrivals at BOHRR on V285 southbound.	
3000		HABKO	CLOCK		VGSI and RNAV glidepath not coincident (VGSI Angle 3.00/TCH 74).	
* LNAV only.		tr 352°	FALSU		JUDD	
* 1 NM to RW35		HONSE 2 NM to RW35	* 1480		GP 3.00° TCH 55	
1 NM		1 NM	3.1 NM		6.1 NM	
CATEGORY	A		B		C	
LPV DA**	990/24		200 (200-½)			
LNAV/VNAV DA	1236/50		446 (500-1)			
LNAV MDA	1180/24 390 (400-½)		1180/35 390 (400-½)		1180/50 390 (400-1)	
CIRCLING	1260-1 466 (500-1)		1340-1½ 546 (600-1½)		1360-2 566 (600-2)	