







WAAS CH 50212 W27A	APP CRS 270°	Rwy Idg 6501 TDZE 1230 Apt Elev 1230
--	------------------------	---

RNAV (GPS) RWY 27
GOGEBIC-IRON COUNTY (IWD)

GOGEBIC-IRON COUNTY (IWD)

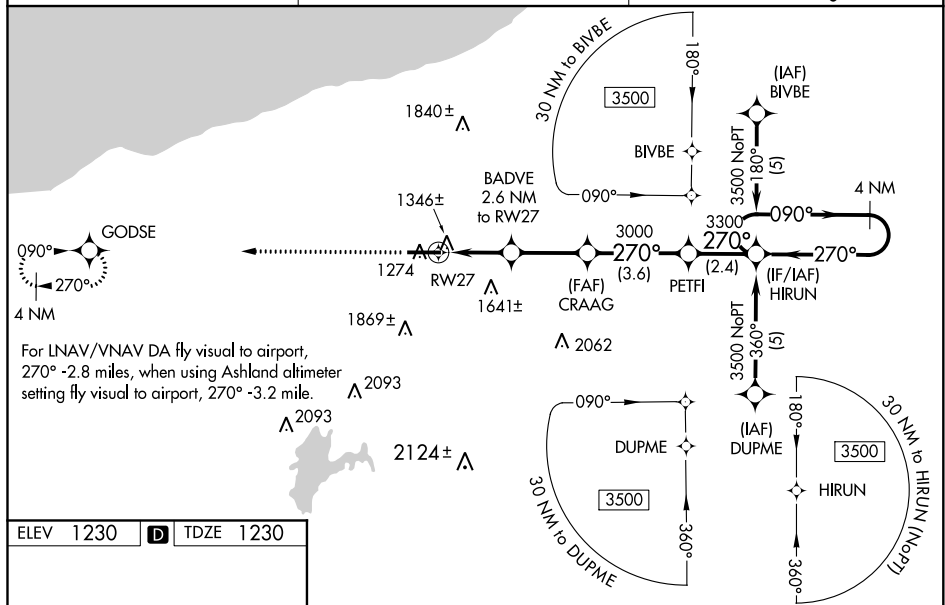
   -27°C	<p>Inoperative table does not apply to LPV and LNAV/VNAV all Cats and LNAV Cats A and B. For uncompensated Baro-VNAV systems, LNAV/VNAV NA below -17°C (2°F) or above 46°C (114°F), DME/DME RNP-0.3 NA. When using Ashland altimeter setting: inop table does not apply to LNAV/VNAV all Cats and LNAV Cat A. When using Ashland altimeter setting: for inoperative MALSR, increase LNAV Cat B visibility to 1 ¼ mile. Baro-VNAV and VDP NA when using Ashland altimeter setting. When local altimeter setting not received, use Ashland altimeter setting and increase all DA 132 feet and all MDA 140 feet, increase LNAV/VNAV Cat C visibility ¼ mile, LNAV Cat C/D visibility ½ mile, and Circling Cat A/B visibility ¼ mile, Cat C ½ mile.</p>	<div>    </div> <div> MALSR MISSED APPROACH: Climb to 3500 direct GODSE and hold. </div>
---	---	---

MALSR



MISSED APPROACH:
Climb to 3500 direct
GODSE and hold.

AWOS-3PT 125.175	MINNEAPOLIS CENTER 133.55	UNICOM 122.8 (CTAF) 0
----------------------------	-------------------------------------	---------------------------------



REIL Rwy 9 **L**
HIRL Rwy 9-27 **L**

CATEGORY	A	B	C	D
LPV DA	1430-1 200 (200-1)			
LNNAV/ VNAV DA	2166-2 936 (1000-2)	2166-2 $\frac{3}{4}$ 936 (1000-2 $\frac{3}{4}$)		2166-3 936 (1000-3)
LNNAV MDA	1900-1 670 (700-1)	1900-1 $\frac{1}{4}$ 670 (700-1 $\frac{1}{4}$)		1900-1 $\frac{1}{2}$ 670 (700-1 $\frac{1}{2}$)
CIRCLING	2100-1 870 (900-1)	2100-1 $\frac{1}{4}$ 870 (900-1 $\frac{1}{4}$)	2100-2 $\frac{1}{2}$ 870 (900-2 $\frac{1}{2}$)	2220-3 990 (1000-3)