

APP CRS	Rwy Idg	6501
090°	TDZE	1230
	Apt Elev	1230

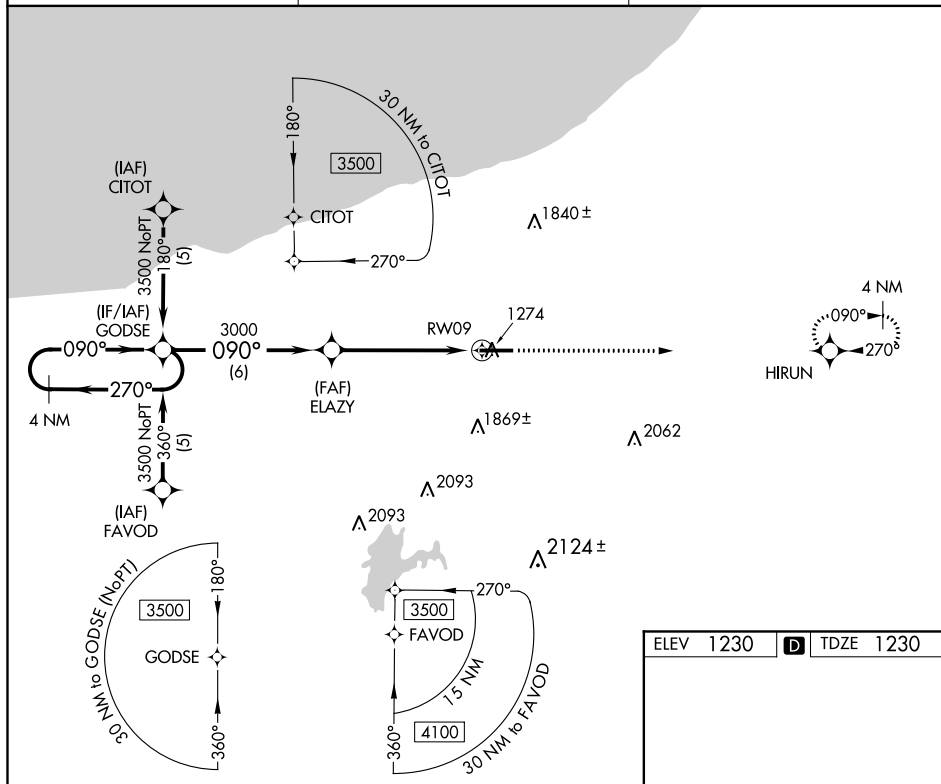
RNAV (GPS) RWY 9
GOGEBIC-IRON COUNTY (IWD)

T DME/DME RNP-0.3 NA. Visibility reduction by helicopters NA. When local
A alimeter setting not received, use Ashland alimeter setting and increase all
 MDA 140 feet, increase LNAV Cat B visibility $\frac{1}{4}$ mile, Cat C/D $\frac{1}{2}$ mile
 and increase Circling Cat A/B visibility $\frac{1}{4}$ mile, Cat C $\frac{1}{2}$ mile.
S -27°C

MISSED APPROACH:
Climb to 3500 direct
HIRUN and hold.

AWOS-3PT
125.175

MINNEAPOLIS CENTER
133.55

UNICOM
122.8 (CTAF) **L**4 NM
Holding Pattern

GODSE

350

ELAZY

2.1 N
to RW

--	--

090° to

RW09

/

 $1303 \pm$

CATEGORY	A	B	C	D
LNAV MDA	1940-1	710 (800-1)	1940-2 710 (800-2)	1940-2¼ 710 (800-2¼)
CIRCLING	2100-1 870 (900-1)	2100-1¼ 870 (900-1¼)	2100-2½ 870 (900-2½)	2220-3 990 (1000-3)

REIL Rwy 9 **L**
HIRL Rwy 9-27 **L**