





VOR/DME IWD 108.8 Chan 25	APP CRS 079°	Rwy Idg 6501 TDZE 1230 Apt Elev 1230
---	------------------------	---

VOR RWY 9

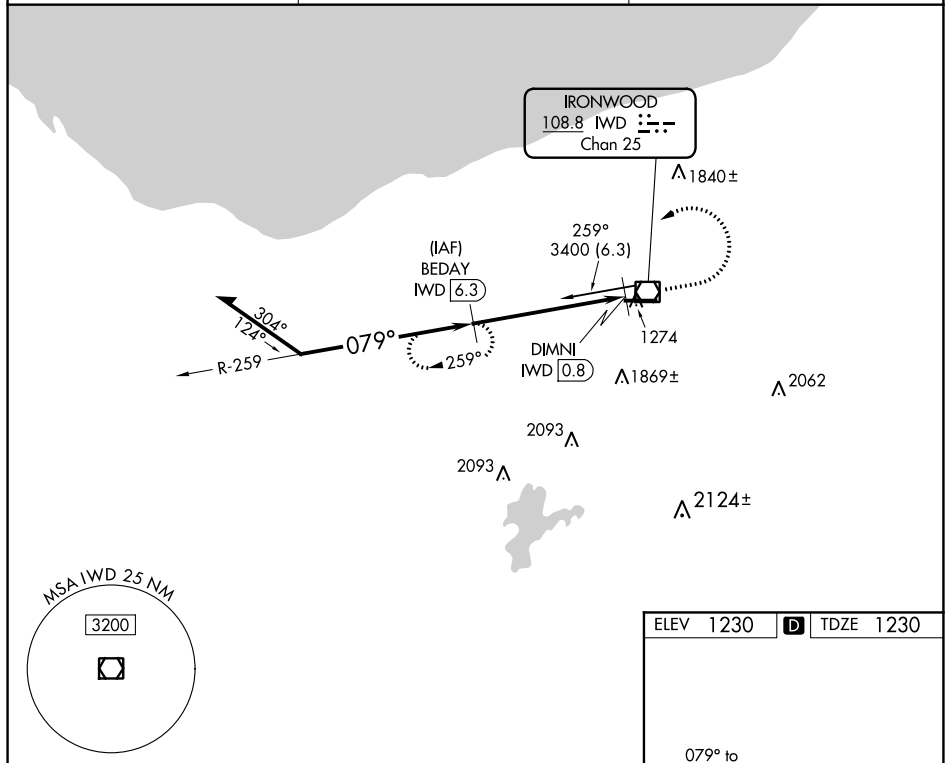
GOGEBIC-IRON COUNTY (IWD)

DME required.

	Rwy 9 helicopter visibility reduction below 1 SM NA. When local altimeter setting not received, use Ashland altimeter setting and increase all MDA 140 feet, increase S-9 visibility Cat C ¼ mile, and Cat D ½ mile.
	
	Increase Circling visibility Cat A/B ¼ mile and Cat C ½ mile.
	-27°C

MISSED APPROACH: Climb to 3300 then climbing left turn to 3400 on heading 240° and IWD R-259 to BEDAY/6.3 DME and hold.

AWOS-3PT 125.175	MINNEAPOLIS CENTER 133.55	UNICOM 122.8 (CTAF) 0
----------------------------	-------------------------------------	---------------------------------

[illegible]