

WAAS CH <b>60933</b> <b>W10A</b>	APP CRS <b>097°</b>	Rwy Idg <b>5501</b> TDZE <b>621</b> Apt Elev <b>621</b>
--	------------------------	---

RNAV (GPS) RWY 10

MANISTEE COUNTY-BLACKER (MBL)

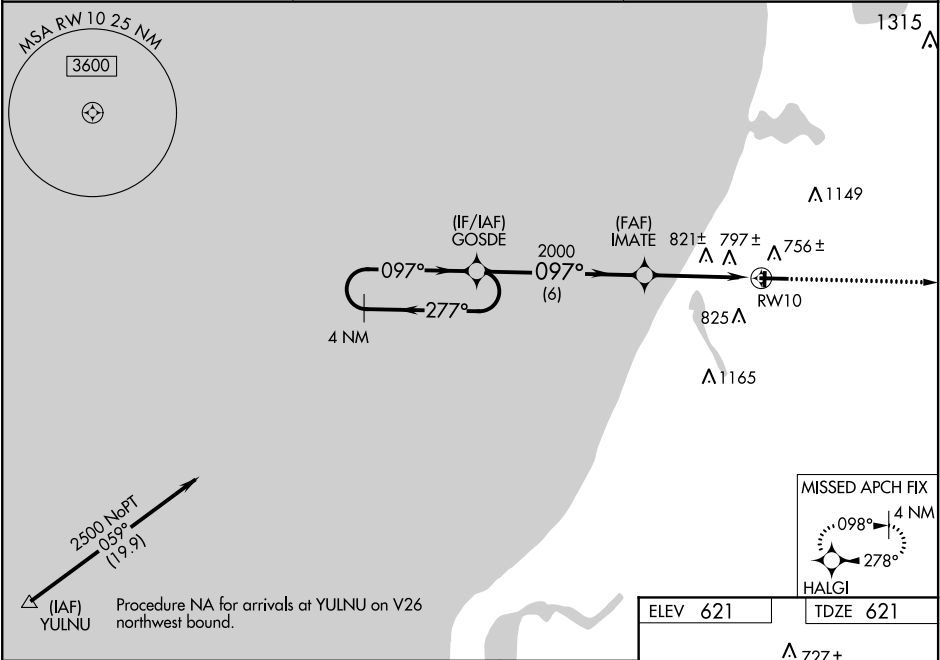
▼

▲

Night landing Rwy 1/19 NA. For uncompensated Baro-VNAV systems, LNAV/VNAV NA below -16°C (4°F) or above 54°C (130°F). DME/DME RNP -0.3 NA. Baro-VNAV and VDP NA with Ludington altimeter setting. Helicopter visibility reduction below ¾ SM not authorized. When local altimeter setting not received, use Ludington altimeter setting and increase all DA 50 feet and all MDA 60 feet. Increase LPV visibility all Cats ¼ mile, LNAV/VNAV visibility all Cats ½ mile. Increase LNAV Cats C/D visibility ½ mile, and Circling Cat C visibility ¼ mile.

MISSED APPROACH:  
Climb to 3000 direct HALGI and hold.

AWOS-3PT <b>111.4</b>	MINNEAPOLIS CENTER <b>120.85 322.35</b>	UNICOM <b>122.8 (CTAF) 1</b>
--------------------------	--	---------------------------------



4 NM Holding Pattern		VGSI and RNAV glidepath not coincident (VGSI Angle 3.00/TCH 29).		3000	HALGI
2500		2000		*LNAV only	
GP 3.00° TCH 53		*1.4 NM to RW10		RW10	
6 NM		2.8 NM		1.4 NM	
CATEGORY	A	B	C	D	
LPV DA	871-¾		250 (300-¾)		
LNAV/VNAV DA	1091-1½		470 (500-1 ⅝)		
LNAV MDA	1080-1	459 (500-1)	1080-1¾	459 (500-1¾)	
CIRCLING	1120-1 499 (500-1)	1160-1 539 (600-1)	1200-1½ 579 (600-1½)	1300-2¼ 679 (700-2¼)	

ELEV 621 TDZE 621

727±

61 640± 28

5501 X 100

678±

097° to RW10

HIRL Rwy 10-28 1

MIRL Rwy 1-19 1

REIL Rwy 10 1