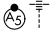


WAAS CH 42532 W28A	APP CRS 278°	Rwy Idg TDZE Apt Elev	5501 621 621
--	------------------------	-----------------------------	---

RNAV (GPS) RWY 28
MANISTEE COUNTY-BLACKER (MBL)

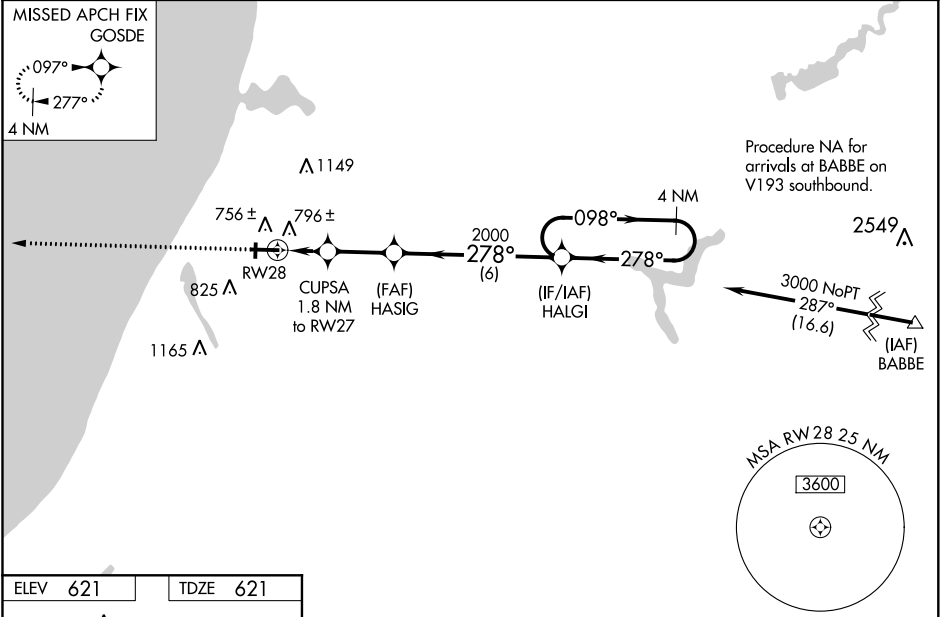
⚠ Night landing: Rwy 1/19 NA. Baro-VNAV NA when using Ludington altimeter setting. For uncompensated Baro-VNAV systems, LNAV/VNAV NA below -16°C (4°F) or above 54°C (130°F). DME/DME RNP-0.3 NA. VDP NA with Ludington altimeter setting. When local altimeter setting not received, use Ludington altimeter setting and increase all DA 50 feet and all MDA 60 feet. Increase LNAV/VNAV visibility all Cats 1/8 mile. Increase LNAV Cats C/D visibility 1/4 mile, and Circling Cat C visibility 1/4 mile.

MALSR



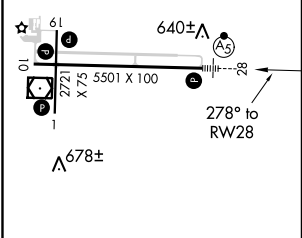
MISSED APPROACH:
Climb to 2500 direct
GOSDE and hold.

AWOS-3PT 111.4	MINNEAPOLIS CENTER 120.85 322.35	UNICOM 122.8 (CTAF) 0
--------------------------	--	---------------------------------



ELEV **621** TDZE **621**

727 ±



HIRL Rwy 10-28 0

MIRL Rwy 1-19 0

REL Rwy 10 0

2500	GOSDE	VGSI and RNAV glidepath not coincident (VGSI Angle 3.00/TCH 45).				4 NM
*LNAV only.		CUPSA 1.8 NM to RW28	HASIG 2000	HALGI	098° → 3000	Holding Pattern
*1.2 NM to RW28		*1240	2000	278°	← 278°	GP 3.00° TCH 50
-1.2 NM - 0.6 NM - 2.4 NM - 6 NM						
CATEGORY	A	B	C	D		
LPV DA	821-1/2		200 (200-1/2)			
LNAV/VNAV DA	984-3/4		363 (400-3/4)			
LNAV MDA	1060-1/2		439 (500-1/2)		1060-3/4 439 (500-3/4)	
CIRCLING	1120-1 499 (500-1)		1160-1 539 (600-1)		1200-1 1/2 579 (600-1 1/2)	
					1300-2 1/4 679 (700-2 1/4)	