

WAAS CH <b>99606</b> <b>W25A</b>	APP CRS <b>249°</b>	Rwy Idg TDZE Apt Elev	<b>5350</b> <b>959</b> <b>959</b>
--	------------------------	-----------------------------	---

# RNAV (GPS) RWY 25

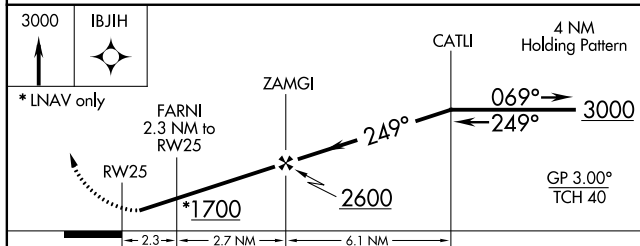
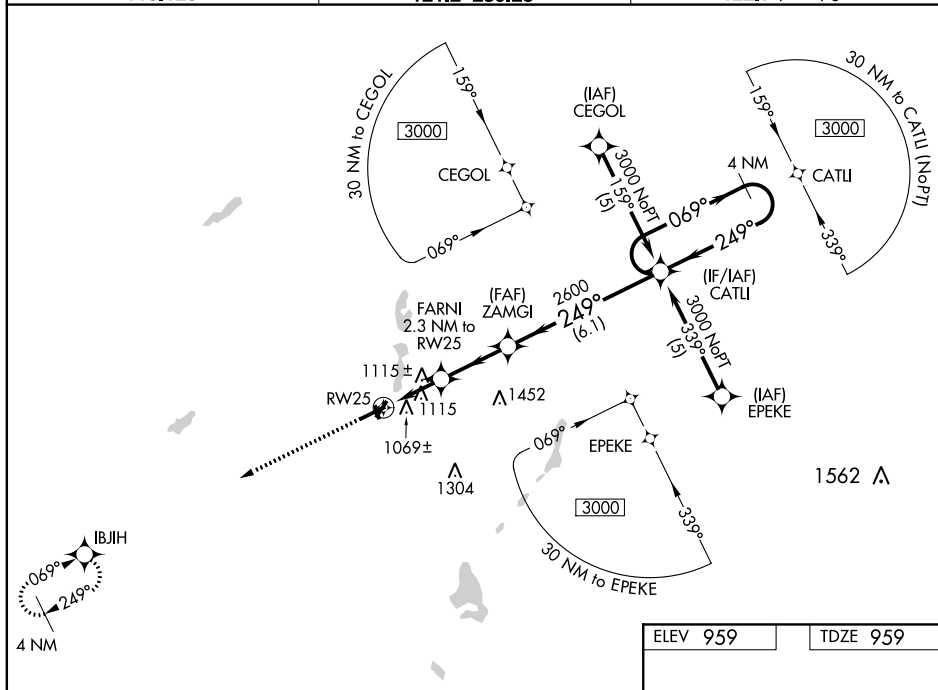
## BRANCH COUNTY MEMORIAL (OEB)

RNP APCH

**▼** Rwy 25 helicopter visibility reduction below 1 SM NA. When local altimeter setting not received, use Sturgis altimeter setting and increase all DAs 48 feet and LPV visibility  $\frac{1}{4}$  mile all Cats and all MDAs 60 feet and LNAV Cat C visibility  $\frac{1}{4}$  mile. Baro-VNAV NA when using Sturgis altimeter setting. For uncompensated Baro-VNAV systems, LNAV/VNAV NA below -16°C or above 54°C. Circling NA to Rwy 16 and 34.

**MISSED APPROACH.**  
Climb to 3000 direct  
IBJIH and hold.

AWOS-3 <b>118.125</b>	GREAT LAKES APP CON ★ <b>121.2 239.25</b>	UNICOM <b>122.7 (CTAF) 0</b>
--------------------------	--	---------------------------------



CATEGORY	A	B	C	D
LPV DA	1306-1¼ 347 (400-1¼)			NA
LNAV/ VNAV DA	1424-1¾ 465 (500-1¾)			NA
LNAV MDA	1420-1 461 (500-1)		1420-1¼ 461 (500-1¼)	NA
CIRCLING	1420-1 461 (500-1)	1440-1 481 (500-1)	1480-1½ 521 (600-1½)	NA

