

WAAS  
CH **82405**  
**W19A**

APP CRS  
**184°**

Rwy Idg  
TDZE  
Apt Elev

**6501**  
**769**  
**772**

**RNAV (GPS) RWY 19**

FREMONT MUNI (F'FX)

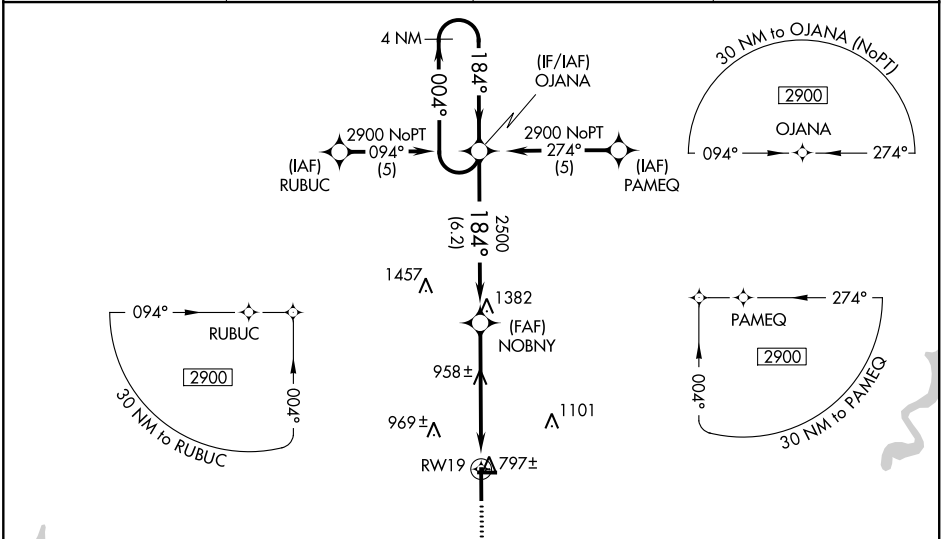
T

A

Baro-VNAV NA when using Muskegon altimeter setting. For uncompensated Baro-VNAV systems, LNAV/VNAV NA below -16°C (4°F) or above 47°C (116°F). Rwy 19 helicopter visibility reduction below ¾ SM NA. DME/DME RNP-0.3 NA. When local altimeter setting not received, use Muskegon altimeter setting and increase all DA 65 feet, and all visibilities ¼ mile. Increase all MDA 80 feet, and Cat C/D visibilities ¼ mile. VDP NA when using Muskegon altimeter setting.

MISSED APPROACH:  
Climb to 2900 direct  
SACOL and hold.

AWOS-3 <b>118.775</b>	GREAT LAKES APP CON ★ <b>119.8 290.35</b>	CLNC DEL <b>118.25</b>	UNICOM <b>123.0</b> (CTAF) <b>0</b>
--------------------------	--	---------------------------	--



ELEV 772

TDZE 769

184° to RW19

61

10

3502 X 75

8

6501

100

1

859±

Δ

1847

Δ

4 NM

MISSED APCH FIX  
SACOL

2900	SACOL	VGSi and RNAV glidepath not coincident (VGSi Angle 3.00/TCH 27).		OJANA	4 NM Holding Pattern
*LNAV only.		*1.3 NM to RW19	NOBNY	2500	2500
		1.3	3.9 NM	6.2 NM	GP 3.00° TCH 40
RW19					
CATEGORY	A	B	C	D	
LPV DA	1074-1 305 (400-1)				
LNAV/VNAV DA	1295-2 526 (600-2)				
LNAV MDA	1220-1	451 (500-1)	1220-1¼ 451 (500-1¼)	1220-1½ 451 (500-1½)	
CIRCLING	1260-1	488 (500-1)	1260-1½ 488 (500-1½)	1340-2 568 (600-2)	