

WAAS CH 82613 W27A	APP CRS 276°	Rwy Idg TDZE Apt Elev	5000 753 755
--	------------------------	-----------------------------	---

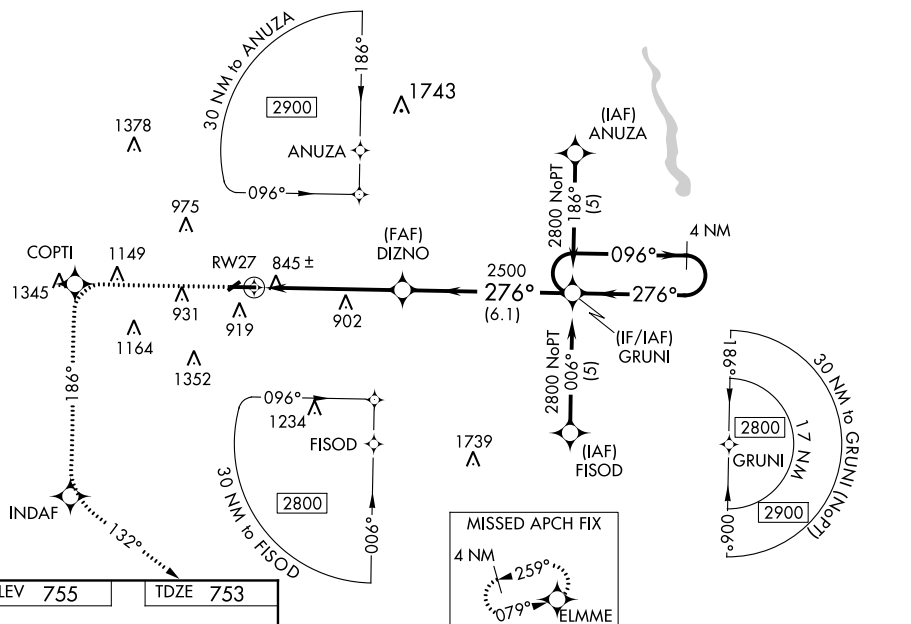
RNAV (GPS) RWY 27

MOUNT PLEASANT MUNI (MOP)

▼ For uncompensated Baro-VNAV systems, LNAV/VNAV NA below -16°C (4°F) or above 47°C (116°F), DME/DME RNP-0.3 NA. When local altimeter setting not received, use **Alma** altimeter setting and increase all DA 42 feet and all MDA 60 feet, increase LPV, LNAV/VNAV all Cats, LNAV Cat D and Circling Cat C visibilities $\frac{1}{4}$ mile. Baro-VNAV and VDP NA when using **Alma** altimeter setting. Circling NA to Rwy5 and 23.

MISSED APPROACH: Climb to 3000 direct COPTI and via 186° track direct INDAF and via 132° track to ELMME and hold.

AWOS-3 133.025	GREAT LAKES APP CON★ 126.45 235.625	UNICOM 123.0 (CTAF) 0
--------------------------	---	---------------------------------

[illegible]