

**TOP ALTITUDE:  
ASSIGNED BY ATC**

AWOS-3

119.475

CTAF

123.05

DETROIT DEP CON

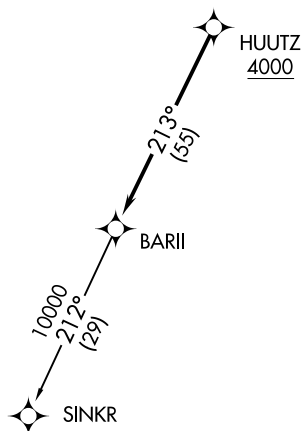
134.3 284.0



TAKEOFF MINIMUMS:

Rwy 9: Standard.

Rwy 27: Standard with minimum climb  
of 476' per NM to 1500.



NOTE: RNAV 1.

NOTE: RADAR required.

NOTE: DME/DME/IRU or GPS required.

NOTE: Turbojet departures at/above 10000, maintain 280K until advised by ATC.

NOTE: Chart not to scale.

## DEPARTURE ROUTE DESCRIPTION

TAKEOFF RUNWAY 9: Climb on heading 096° to 1400 then as assigned for RADAR vectors to cross HUUTZ at or above 4000, thence....

**TAKEOFF RUNWAY 27:** Climb on heading 276° to 1500 then as assigned for RADAR vectors to cross HUUTZ at or above 4000, thence....

....on track 213° to BARII, then on (transition). Maintain ATC assigned altitude, expect filed altitude 10 minutes after departure.

### SINKR TRANSITION (BARII2.SINKR):