

TOP ALTITUDE:
ASSIGNED AT ATC

TAKEOFF MINIMUMS:

Rwy 9: Standard.

Rwy 27: Standard with minimum climb
of 476' per NM to 1500.

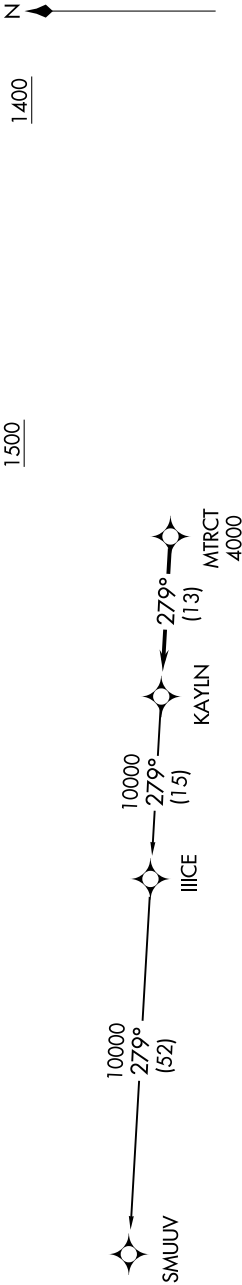
NOTE: RNAV 1.

NOTE: RADAR required.

NOTE: DME/DME/IRU or GPS required.

NOTE: Turbojet departures at/above 10000,
maintain 280K until advised by ATC.

AWOS-3
119.475
CTAF
123.05
DETROIT DEP CON
134.3 284.0



NOTE: Chart not to scale.

DEPARTURE ROUTE DESCRIPTION

TAKEOFF RUNWAY 9: Climb on heading 096° to 1400 then as assigned for RADAR vectors to cross MTRCT at or above 4000, thence....

TAKEOFF RUNWAY 27: Climb on heading 276° to 1500 then as assigned for RADAR vectors to cross MTRCT at or above 4000, thence....

....on track 279° to KAYLN, then on (transition). Maintain ATC assigned altitude, expect filed altitude 10 minutes after departure.

SMUUV TRANSITION (KAYLN2.SMUUV):