

WAAS CH 50209 W11A	APP CRS 109°	Rwy Idg TDZE Apt Elev	4300 736 737
--	------------------------	-----------------------------	---

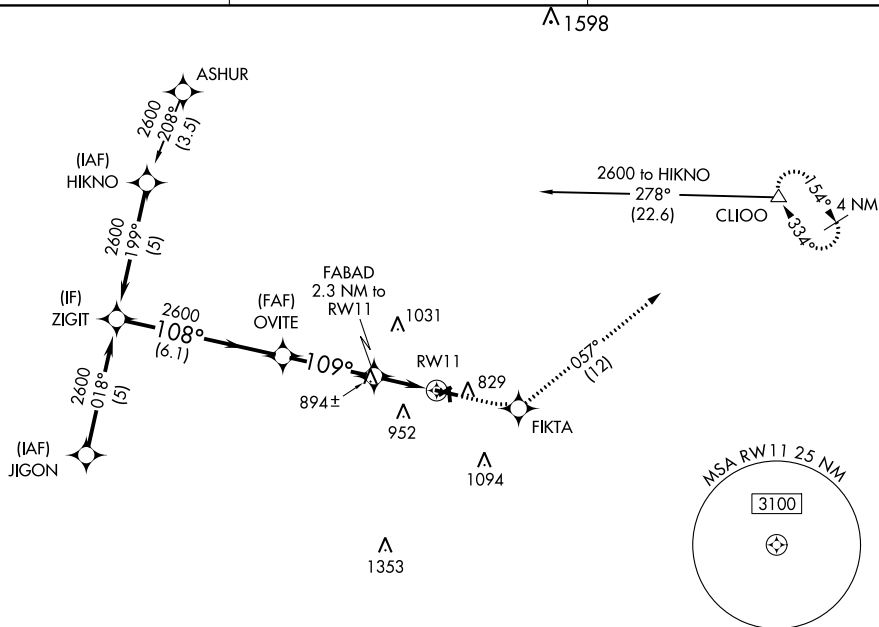
RNAV (GPS) RWY 11
OWOSSO COMMUNITY (RNP)

RNP APCH.

T Circling NA to Rwy 6, 18, 24, and 36. For uncompensated Baro-VNAV systems, LNAV/VNAV NA below -16°C (4°F) or above 54°C (130°F). Rwy 11 helicopter visibility reduction below $\frac{3}{4}$ SM NA.

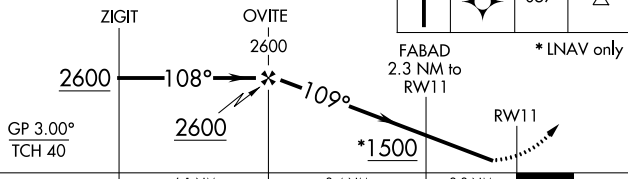
MISSED APPROACH: Climb to 3000 direct FIKTA and on track 057° to CLIOO and hold.


AWOS-3 118,025	GREAT LAKES APP CON ★ 128.55 257.9	UNICOM 123.0 (CTAF) 0
--------------------------	--	---------------------------------

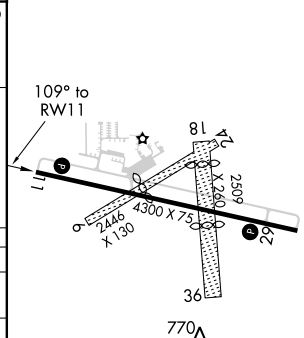


ELEV 737		TDZE 736
----------	--	----------

VGSI and RNAV glidepath not coincident
(VGSI Angle 3.50/TCH 25).



CATEGORY		A		B		C		D	
LPV	DA	1079-1¼		343 (400-1¼)				NA	
LNAV/ VNAV	DA	1258-2		522 (600-2)				NA	
LNAV	MDA	1180-1		444 (500-1)		1180-1¼ 444 (500-1¼)		NA	
 CIRCLING		1220-1 483 (500-1)		1260-1 523 (600-1)		1400-1¾ 663 (700-1¾)		NA	



REIL Rwy 11 and 29 **L**
MIRL Rwy 11-29 **L**