


WAAS CH <b>77811</b> <b>W01A</b>	APP CRS <b>010°</b>	Rwy Idg TDZE <b>1133</b> Apt Elev <b>1182</b>	<b>6501</b>
--	------------------------	---	-------------

RNAV (GPS) RWY 1

FORD (IMT)

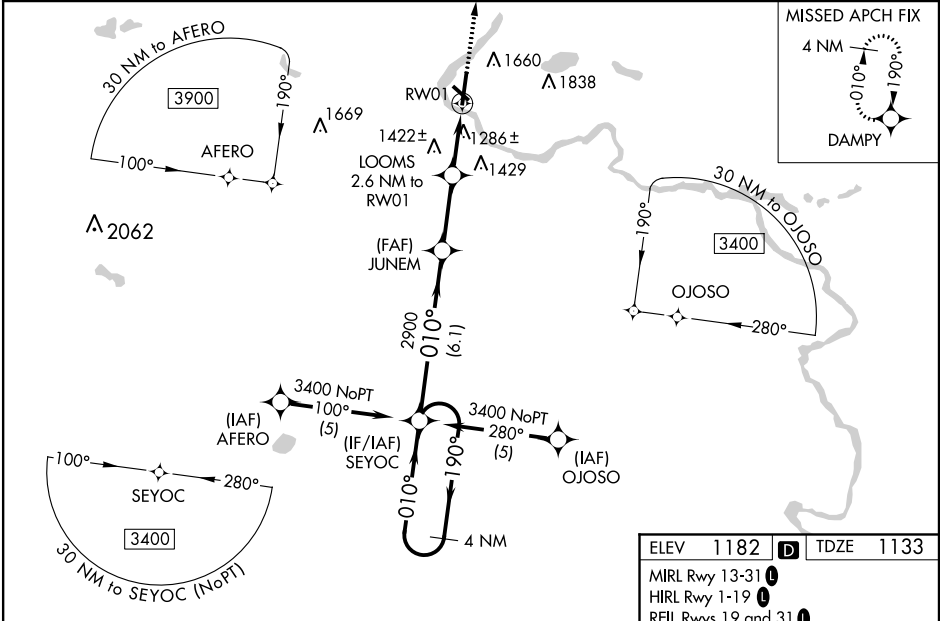
**▼** Inoperative table does not apply to LPV. For uncompensated Baro-VNAV systems, LNAV/VNAV NA below -17°C (2°F) or above 54°C (130°F). Circling NA NE of Rwy 19 and 31. DME/DME RNP-0.3 NA. When local altimeter setting not received, use Escanaba altimeter setting and increase all DA/MDA 180 feet, increase LPV all Cats visibility ¼ SM, LNAV/VNAV all Cts visibility ¼ SM, LNAV Cat C/D visibility ½ SM, and Circling Cat B visibility ¼ SM, Cat C/D visibility ¾ SM. For inoperative MALSR increase visibility LNAV Cat A and B ¼ mile. For Inoperative MALSR when using Escanaba altimeter setting, increase LPV all Cts visibility to 1½ mile, LNAV Cat A visibility to 1 mile. Baro-VNAV and VDP NA when using Escanaba altimeter setting. Circling to Rwy 31 NA at night. Helicopter visibility reduction below ¾ SM NA.

MALSR

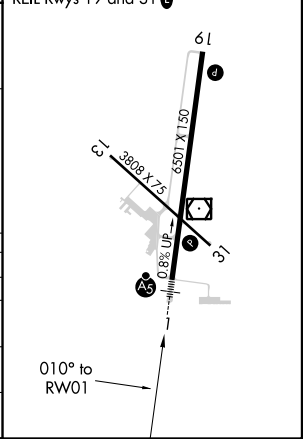


MISSED APPROACH:  
Climb to  
3400 direct  
DAMPY  
and hold.

ASOS <b>119,025</b>	MINNEAPOLIS CENTER <b>121.25 322.5</b>	UNICOM <b>122.8 (CTAF) 1</b>
------------------------	---	---------------------------------



4 NM Holding Pattern SEYOC		3400 DAMPY	
3400 ← 190° 010° →		* LNAV only	
GP 3.00° TCH 53		* 2000	
JUNEM		LOOMS 2.6 NM to RW01	
2900		* 1.8 NM to RW01	
6.1 NM		RW01	
2.7 NM		0.8 NM	
0.8 NM		1.8 NM	
CATEGORY	A	B	C
LPV DA	1383-¾ 250 (300-¾)		
LNAV/VNAV DA	1806-2 673 (700-2)		
LNAV MDA	1760-¾ 627 (600-¾)	1760-1¼ 627 (600-1¼)	1760-1½ 627 (600-1½)
CIRCLING	1760-1 578 (600-1)	1780-1 598 (600-1)	1780-1¾ 598 (600-¾)
			1840-2 658 (700-2)



EC-1, 03 DEC 2020 to 31 DEC 2020

EC-1, 03 DEC 2020 to 31 DEC 2020