

APP CRS  
190°

Rwy Idg  
TDZE  
Apt Elev

6376  
1182  
1182

RNAV (GPS) RWY 19  
FORD (IMT)

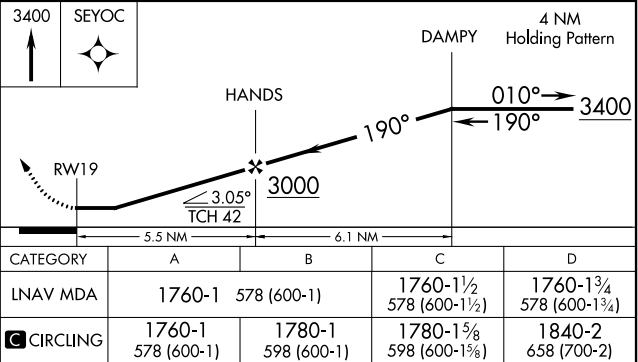
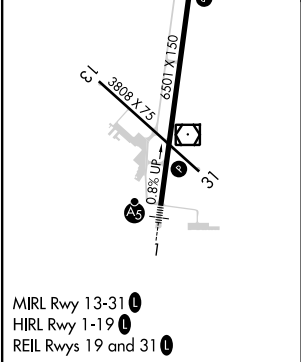
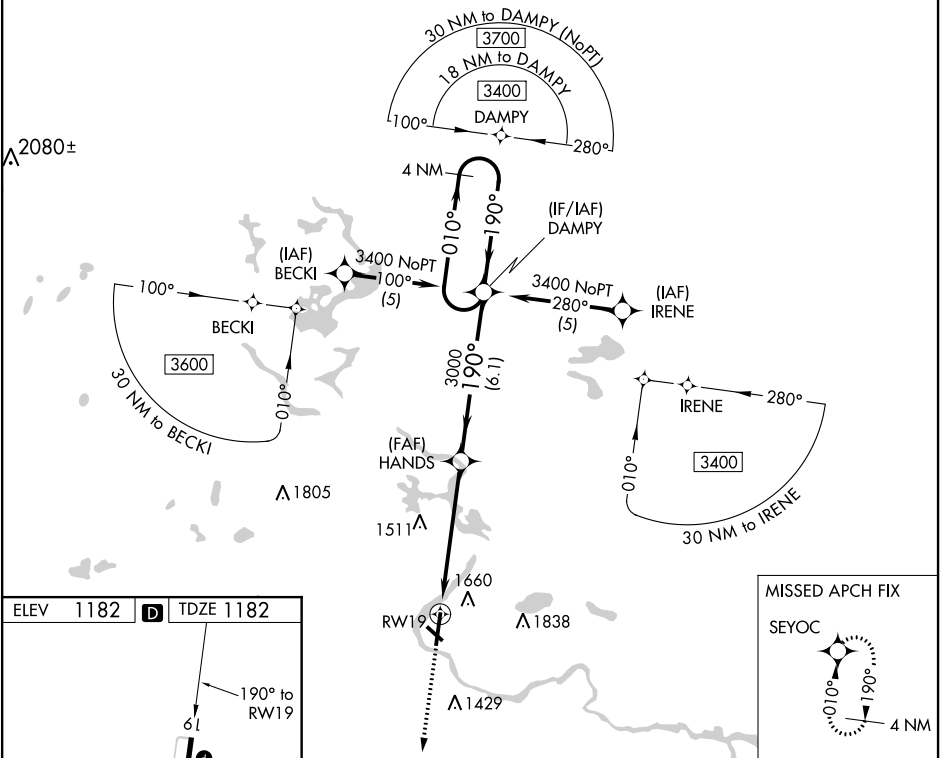
⚠

⚠

Circling NA northeast of Rwy 19 and 31. DME/DME RNP-0.3 NA. Helicopter visibility reduction below 1 SM NA. When local altimeter setting not received, use Escanaba altimeter setting and increase all MDA 180 feet, increase LNAV Cat B visibility ¼ SM, Cat C visibility ½ SM, Cat D visibility ¾ SM, and Circling Cat B visibility ¼ SM, Cat C visibility ½ SM Cat D visibility ¾ SM. Rwy 19 Straight-in and Circling and Circling to Rwy 31 NA at night.

MISSED APPROACH:  
Climb to 3400 direct  
SEYOC and hold.

ASOS 119.025	MINNEAPOLIS CENTER 121.25 322.5	UNICOM 122.8 (CTAF) 0
-----------------	------------------------------------	--------------------------



EC-1, 03 DEC 2020 to 31 DEC 2020

EC-1, 03 DEC 2020 to 31 DEC 2020