

VOR/DME IMT	APP CRS	Rwy Idg	3808
111.2	323°	TDZE	1131
Chan 49		Apt Elev	1182

VOR RWY 31

FORD (IMT)

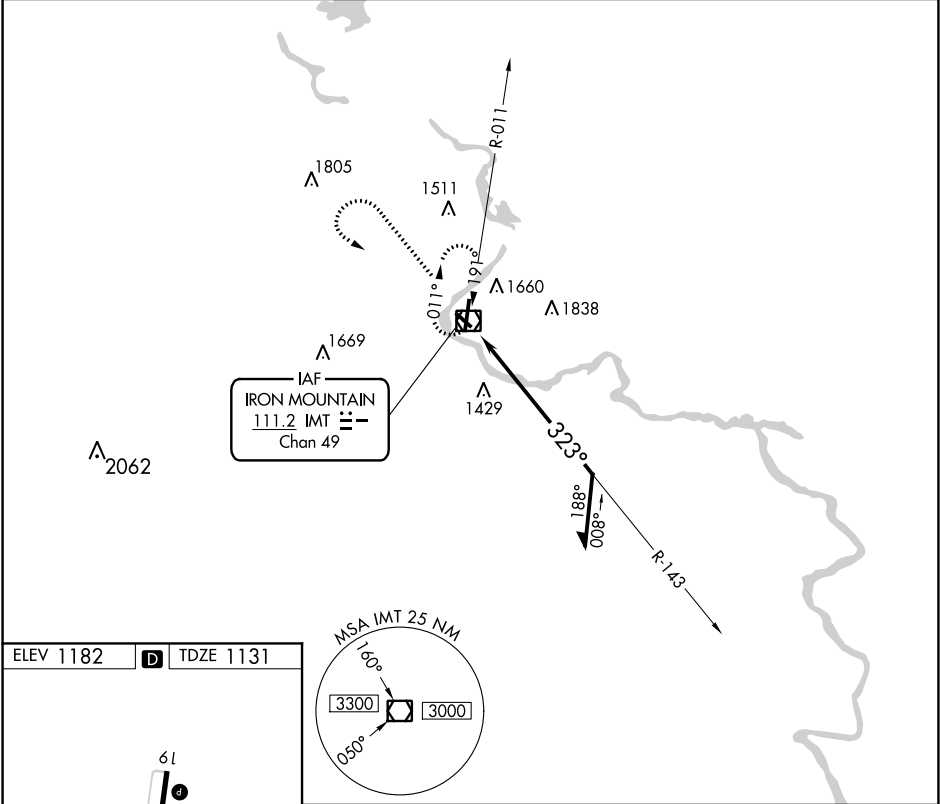
▼

▲

Circling NA northeast of Rwy 19 and 31. Helicopter visibility reduction below 1 SM NA. When local altimeter setting not received, use Escanaba altimeter setting and increase all MDA 180 feet, increase S-31 Cat B visibility ¼ SM, Cat C visibility ¾ SM, Cat D visibility ½ SM, and Circling Cat B visibility ¼ SM, Cat C/D visibility ¾ SM.

MISSED APPROACH: Climb to 3100 then left turn direct IMT VOR/DME and hold.

ASOS 119.025	MINNEAPOLIS CENTER 121.25 322.5	UNICOM 122.8 (CTAF) 0
-----------------	------------------------------------	--------------------------



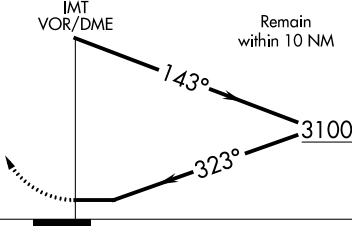





ELEV 1182

D

TDZE 1131

MIRL Rwy 13-31
HIRL Rwy 1-19
REIL Rwy 19 and 31

<div>3100</div> <div></div>		<div>IMT</div> <div></div>	<div>IMT VOR/DME</div> <div></div>																
<table><tr><th>CATEGORY</th><th>A</th><th>B</th><th>C</th><th>D</th></tr><tr><td>S-31</td><td>1760-1</td><td>629 (600-1)</td><td>1760-1¾ 629 (600-1¾)</td><td>1760-2 629 (600-2)</td></tr><tr><td> CIRCLING</td><td>1760-1 578 (600-1)</td><td>1780-1 598 (600-1)</td><td>1780-1¾ 598 (600-1¾)</td><td>1840-2 658 (700-2)</td></tr></table>					CATEGORY	A	B	C	D	S-31	1760-1	629 (600-1)	1760-1¾ 629 (600-1¾)	1760-2 629 (600-2)	 CIRCLING	1760-1 578 (600-1)	1780-1 598 (600-1)	1780-1¾ 598 (600-1¾)	1840-2 658 (700-2)
CATEGORY	A	B	C	D															
S-31	1760-1	629 (600-1)	1760-1¾ 629 (600-1¾)	1760-2 629 (600-2)															
 CIRCLING	1760-1 578 (600-1)	1780-1 598 (600-1)	1780-1¾ 598 (600-1¾)	1840-2 658 (700-2)															

EC-1, 03 DEC 2020 to 31 DEC 2020

EC-1, 03 DEC 2020 to 31 DEC 2020