

NDB IRS  
382

APP CRS  
170°

Rwy Idg	<b>5201</b>
TDZE	<b>915</b>
Apt Elev	<b>924</b>

NDB RWY 18  
KIRSCH MUNI (IRS)



**A NA**

When local altimeter setting not received, use Three Rivers altimeter setting and increase all MDA 40 feet, increase S-18 Cat C and D visibility and Circling Cat C  $\frac{1}{4}$  mile. Rwy 18 helicopter visibility reduction below 1 SM NA. Procedure NA at night.

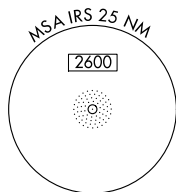
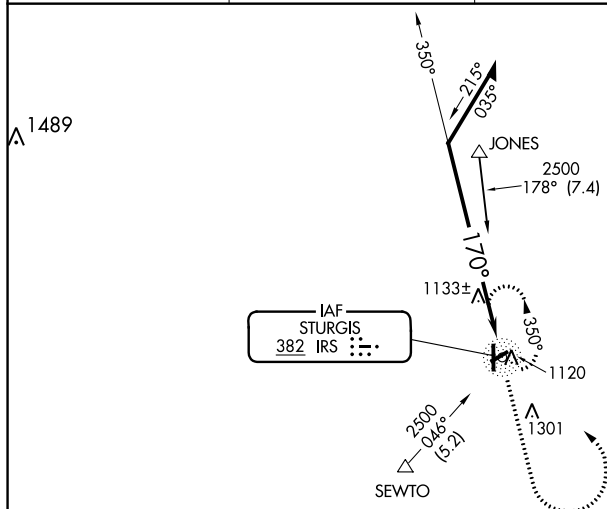
**MISSED APPROACH:** Climb to 2500 then left turn direct IRS NDB and hold.

AWOS-3  
**121.325**

GREAT LAKES APP CON ★  
121.2 239.25

CLNC DEL  
**118.325**

UNICOM  
123.05 (CTAF) **L**



Remain  
within 10 NM

IRS

2500



IRS

2500

 $\cdot 170^\circ$ 

CATEGORY	A	B	C	D
S-18	1500-1	585 (600-1)	1500-1½ 585 (600-1½)	1500-1¾ 585 (600-1¾)
CIRCLING	1500-1	576 (600-1)	1500-1½ 576 (600-1½)	1620-2¼ 696 (700-2¼)

STURGIS, MICHIGAN  
Amdt 5E 24MAY18

41°49'N-85°26'W

KIRSCH MUNI (IRS)  
NDB RWY 18

