

LOC I-GLR <b>111.1</b>	APP CRS <b>096°</b>	Rwy ldg TDZE <b>6579</b> <b>1321</b> Apt Elev <b>1328</b>
---------------------------	------------------------	--

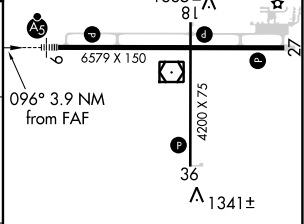
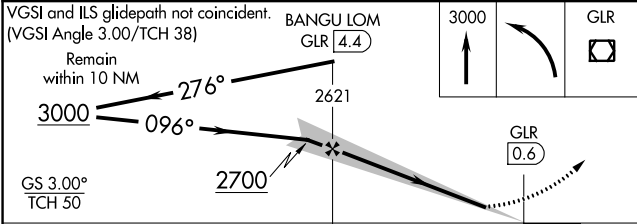
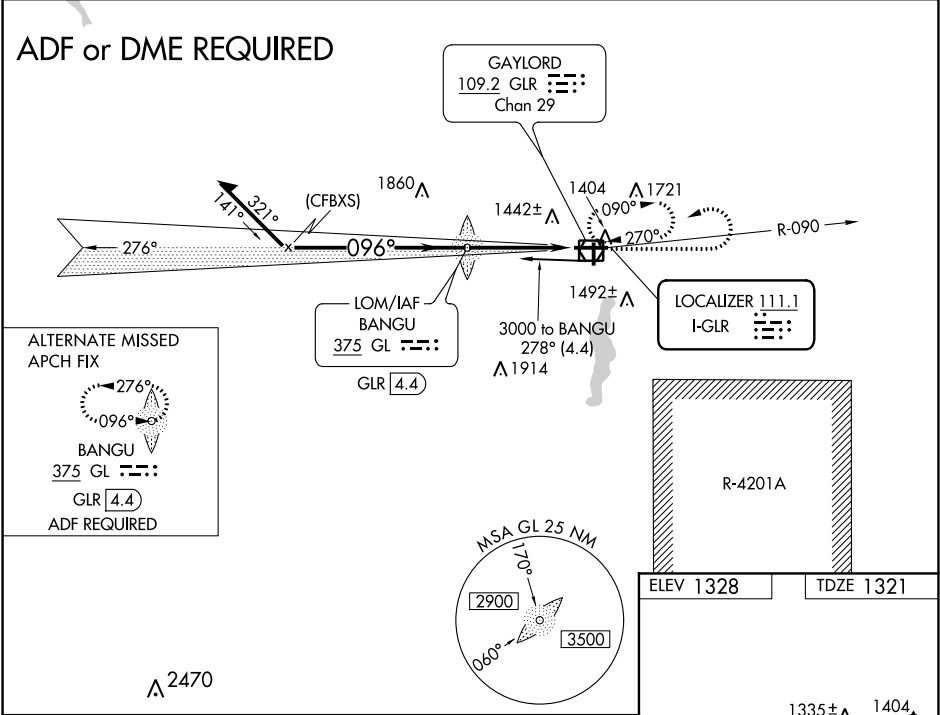
ILS or LOC RWY 9  
GAYLORD RGNL (GLR)

**NA** When local altimeter setting not received, use Grayling altimeter setting and increase all DA 71 feet and all MDA 80 feet; increase S-LOC 9 and Circling Cat C/D visibility ¼ mile. For inop MALSR when using Grayling altimeter setting, increase S-ILS all Cats visibility to ¾ mile. Night landing: Rwy 18,36 NA.

MALSR

MISSED APPROACH:  
Climb to 3000 then left turn direct GLR VOR/DME and hold.

ASOS <b>118.375</b>	MINNEAPOLIS CENTER <b>134.6 354.05</b>	UNICOM <b>122.8 (CTAF) 0</b>
------------------------	---	---------------------------------



CATEGORY	A	B	C	D
S-ILS 9	1521-½ 200 (200-½)			
S-LOC 9	1860-½	539 (600-½)	1860-1	539 (600-1)
CIRCLING	1860-1 532 (600-1)	1940-1 612 (700-1)	1940-1¾ 612 (700-1¾)	2080-2½ 752 (800-2½)

FAF to MAP 3.9 NM				
Knots	60	90	120	150 180
Min:Sec	3:54	2:36	1:57	1:34 1:18

EC-1, 03 DEC 2020 to 31 DEC 2020

EC-1, 03 DEC 2020 to 31 DEC 2020