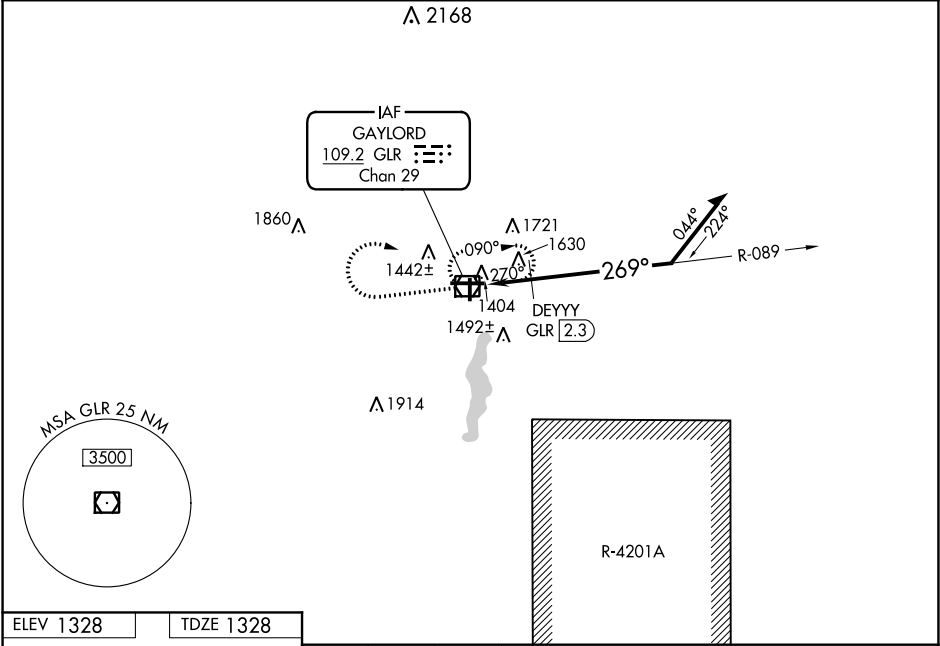


VOR/DME GLR	APP CRS	Rwy Idg	6579
109.2	269°	TDZE	1328
Chan 29		Apt Elev	1328

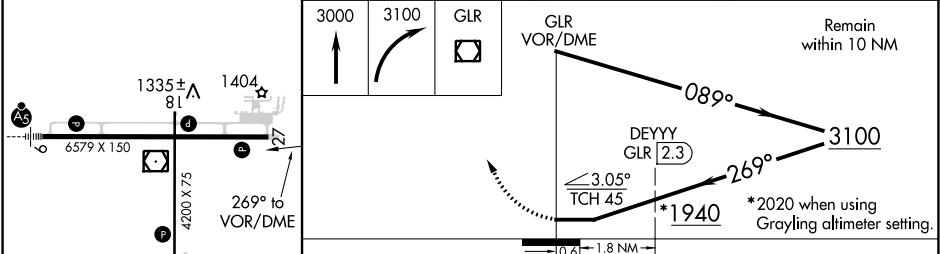
VOR RWY 27  
GAYLORD RGNL (GLR)

<p><b>⚠</b> Circling Rwy 18, 36 NA at night. Rwy 27 helicopter visibility reduction below ¾ SM NA. When local altimeter setting not received, use Grayling altimeter setting and increase all MDA 80 feet. Increase S-27 and Circling Cat C/D visibility ¼ mile. Increase DEYYY FIX minimums S-27 and Circling Cat C/D visibility ¼ mile.</p>	<p><b>MISSED APPROACH:</b> Climb to 3000 then climbing right turn to 3100 direct GLR VOR/DME and hold.</p>
---	--

ASOS 118.375	MINNEAPOLIS CENTER 134.6 354.05	UNICOM 122.8 (CTAF) <b>0</b>
-----------------	------------------------------------	---------------------------------



ELEV 1328	TDZE 1328
-----------	-----------



CATEGORY	A	B	C	D
S-27	1940-1	612 (700-1)	1940-1¾	612 (700-1¾)
CIRCLING	1940-1	612 (700-1)	1940-1¾ 612 (700-1¾)	2080-2½ 752 (800-2½)
DEYYY FIX MINIMUMS				
S-27	1880-1	552 (600-1)	1880-1⅝	552 (600-1⅝)
CIRCLING	1880-1	1940-1 552 (600-1)	1940-1¾ 612 (700-1¾)	2080-2½ 752 (800-2½)

HIRL Rwy 9-27 **0**  
MIRL Rwy 18-36 **0**  
REIL Rwy 18, 27 and 36 **0**

EC-1, 03 DEC 2020 to 31 DEC 2020

EC-1, 03 DEC 2020 to 31 DEC 2020