

PORT HURON, MICHIGAN

AL-5445 (FAA)

18200

NDB RWY 4

ST CLAIR COUNTY INTL (PHN)

LOM PH <b><u>332</u></b>	APP CRS <b>043°</b>	Rwy Idg TDZE Apt Elev	<b>5104</b> <b>647</b> <b>650</b>
-----------------------------	------------------------	-----------------------------	---

**V** When local altimeter setting not received, use Troy altimeter setting and increase all MDA 100 feet, increase S-4 and Circling Cats C and D visibility  $\frac{1}{4}$ . For inoperative MALSR, increase S-4 Cats C and D visibility to  $\frac{1}{2}$  mile. For inoperative MALSR when using Troy altimeter setting, increase S-4 Cat D visibility to  $\frac{1}{2}$  mile. Night landing: Rwy 10, 22, 28 NA.

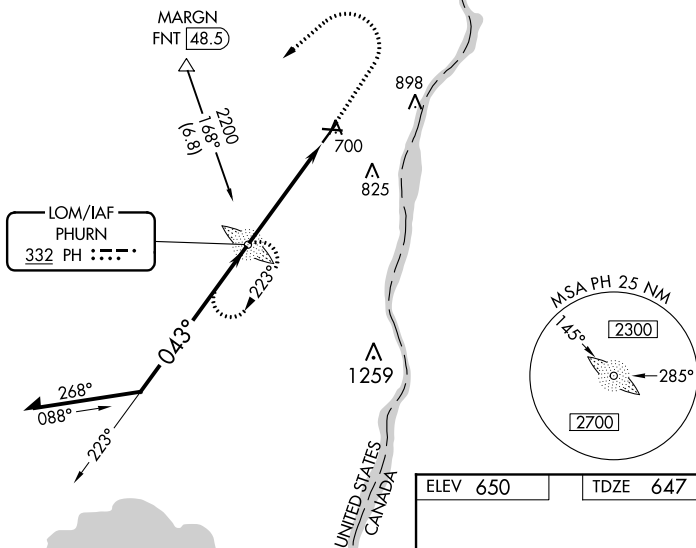
MALSR



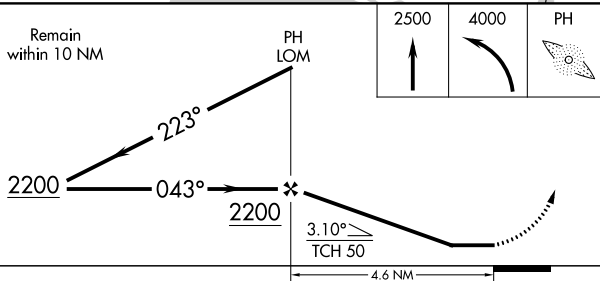
**MISSED APPROACH:**  
Climb to 2500 then  
climbing left turn to  
4000 direct PHURN  
LOM and hold.


AWOS-3  
118.375

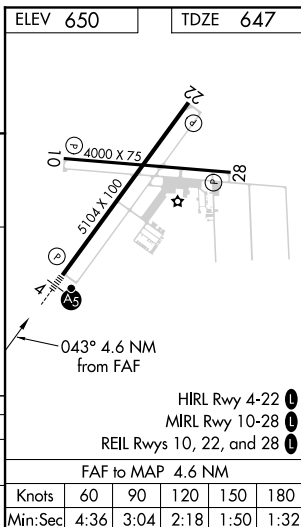
SELFRIIDGE APP CON ★  
119.6 391.9

UNICOM  
123.05 (CTAF) 

Remain  
within 10 NM



CATEGORY	A	B	C	D
S-4	1160- <sup>3</sup> / <sub>4</sub>	513 (600- <sup>3</sup> / <sub>4</sub> )	1160-1	513 (600-1)
 CIRCLING	1160-1	510 (600-1)	1260-1 <sup>3</sup> / <sub>4</sub> 610 (700-1 <sup>3</sup> / <sub>4</sub> )	1260-2 610 (700-2)



PORT HURON, MICHIGAN

Amdt 5 18SEP14

ST CLAIR COUNTY INTL (PHN)

NDB RWY 4

42°55'N-82°32'W

EC-1, 03 DEC 2020 to 31 DEC 2020