

VOR/DME LFD	APP CRS	Rwy Idg	NA
111.2	328°	TDZE	NA
Chan 49		Apt Elev	941

VOR/DME-A

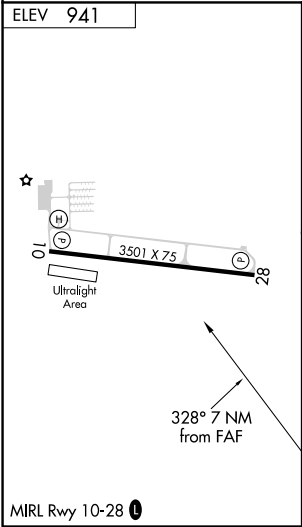
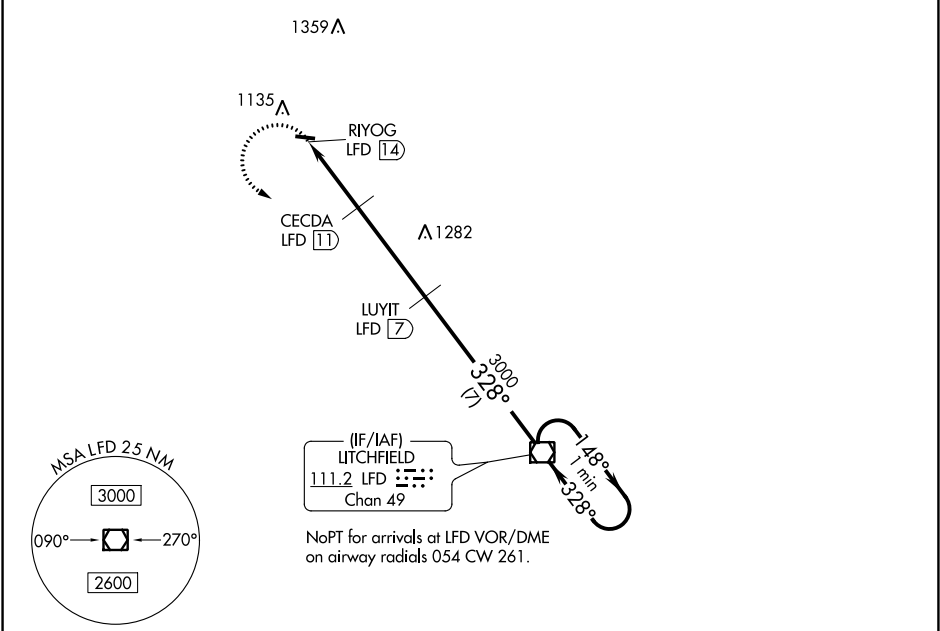
BROOKS FIELD (RMY)

⚠

When local altimeter setting not received, use Battle Creek altimeter setting and increase all MDA 40 feet. Helicopter visibility reduction below ¾ SM NA. Night landing: Rwy 10 NA.

MISSED APPROACH: Climbing left turn to 3000 direct LFD VOR/DME and hold.

AWOS-3	GREAT LAKES APP CON ★	UNICOM
120.025	119.2 239.25	122.8 (CTAF) 0



3000 LFD					LUYIT LFD 7					LFD VOR/DME One Minute Holding Pattern				
3000					328°					148°				
RIYOG LFD 14					CECDA LFD 11					3000				
1680					3 NM					4 NM				
CATEGORY					A					B				
CIRCLING					1500-1					559 (600-1)				
										1500-1½				
										559 (600-1½)				
										NA				

EC-1, 03 DEC 2020 to 31 DEC 2020

EC-1, 03 DEC 2020 to 31 DEC 2020