

APP CRS
227°

Rwy Idg
TDZE
666

4801
Apt Elev
666

RNAV (GPS) RWY 23

SOUTH HAVEN AREA RGNL (LWA)

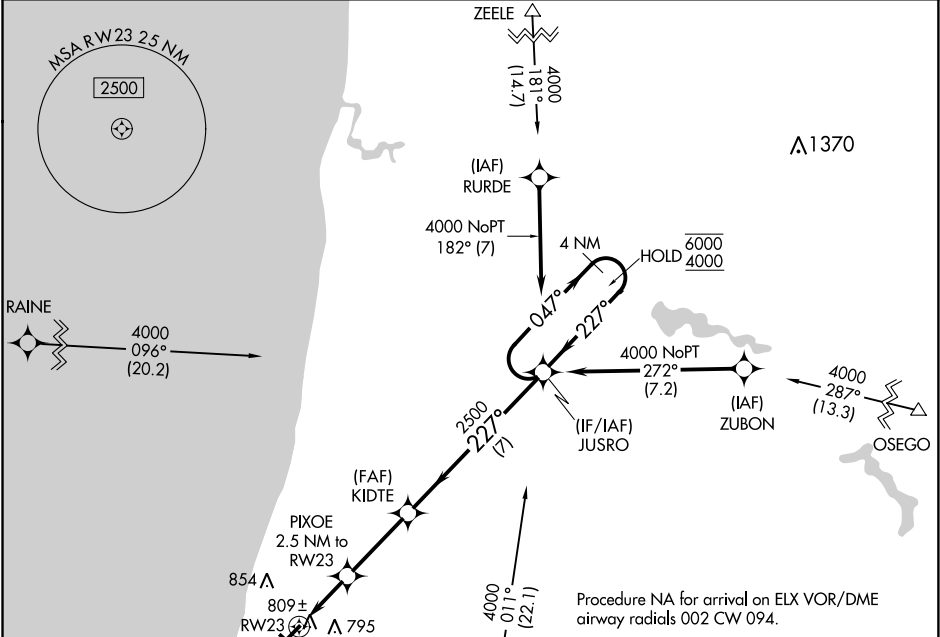
RNP APCH.

⚠

Circling NA to Rwy 14 and 32.
Rwy 23 helicopter visibility reduction below ¾ SM NA.

MISSED APPROACH: Climb to 4000 direct SUSOY and hold.
Continue climb-in-hold to 4000.

AWOS-3 118.025	SOUTH BEND APP CON ★ 118.55 257.8	UNICOM 122.8 (CTAF) 0
--------------------------	---	---------------------------------



ELEV 666

TDZE 666

Visual Segment - Obstacles.

SUSOY

PIXOE 2.5 NM to RW23

KIDTE

JUSRO

4 NM Holding Pattern

1.1 NM to RWY 23

1500

2500

6000 4000

047° 227°

1.1

1.4

3.1

7 NM

CATEGORY	A	B	C	D
LNNAV MDA	1060-1	394 (400-1)	1060-1½	394 (400-1½)
CIRCLING	1120-1 454 (500-1)	1140-1 474 (500-1)	1440-2¼ 774 (800-2¼)	1440-2½ 774 (800-2½)

REIL Rwy 5 and 23

MIRL Rwy 5-23 0