

WAAS
CH **77534**
W10A

APP CRS
100°

Rwy ldg
TDZE **1172**
Apt Elev **1184**

5000

1172

1184

RNAV (GPS) RWY 10

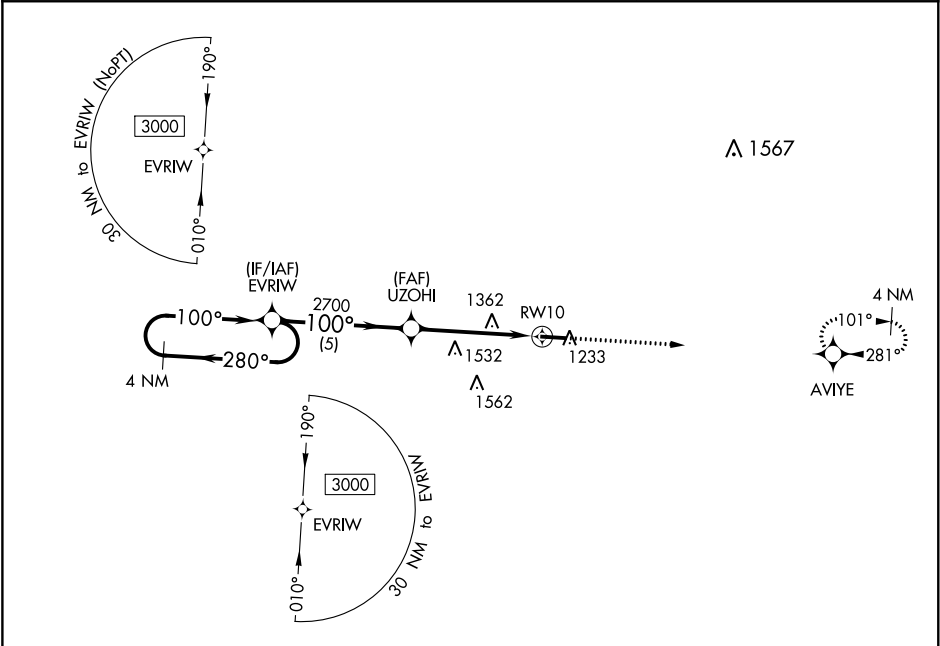
HILLSDALE MUNI (JYM)

▼

For uncompensated Baro-VNAV systems, LNAV/VNAV NA below -17°C (2°F) or above 54°C (130°F). DME/DME RNP-0.3 NA.

MISSED APPROACH:
Climb to 3100 direct
AVIYE and hold.

AWOS-3 121.025	TOLEDO APP CON 134.35 317.55	UNICOM 122.8 (CTAF) 0
--------------------------	--	---------------------------------



ELEV 1184

TDZE 1172

100° to RWY 10

1339±

0.6% UP → 5000 X 100

REIL Rwy 10 and 28 0

HIRL Rwy 10-28 0

4 NM Holding Pattern				3100	AVIYE
EVRIW				↑	✧
3000 ← 280° 100° →				*LNAV only	
GP 3.00° TCH 46				*1.6 NM to RWY 10	
EVRIW				RWY 10	
UZOH1				5 NM	
2700				3.1 NM	
2700				1.6 NM	
CATEGORY	A	B	C	D	
LPV DA	1441-1	269 (300-1)		NA	
LNAV/VNAV DA	1601-1½	429 (500-1½)		NA	
LNAV MDA	1720-1	548 (600-1)	1720-1⅝ 548 (600-1⅝)	NA	
CIRCLING	1720-1	536 (600-1)	1720-1⅝ 536 (600-1⅝)	NA	