

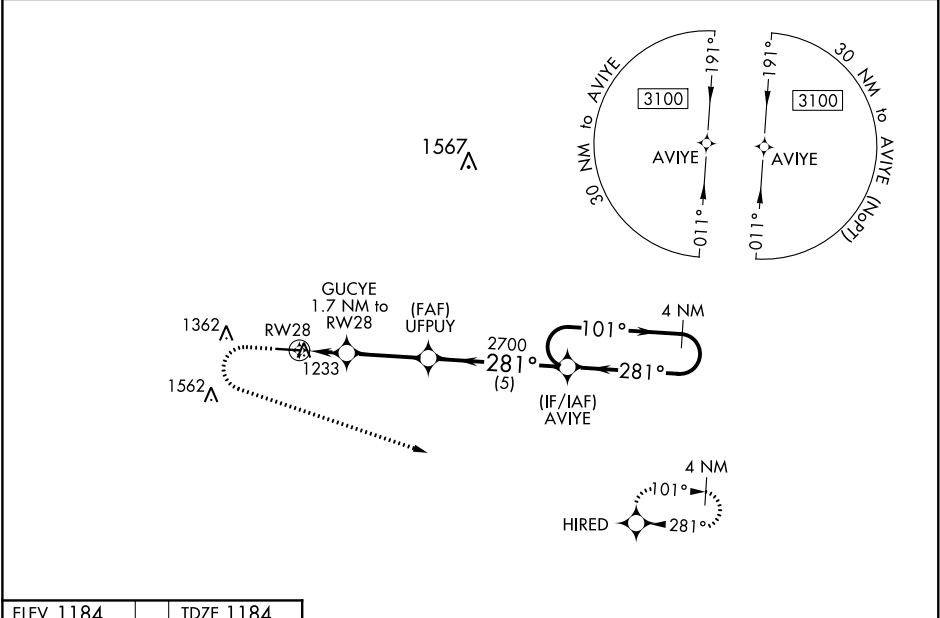
WAAS CH 50134 W28A	APP CRS 281°	Rwy Idg TDZE Apt Elev	5000 1184 1184
--	------------------------	-----------------------------	---

RNAV (GPS) RWY 28

HILLSDALE MUNI (JYM)

RNP APCH.	MISSED APPROACH: Climb to 1700 then climbing left turn to 3100 direct HIRED and hold.
▼ Rwy 28 helicopter visibility reduction below ¾ SM NA. For uncompensated Baro-VNAV systems, LNAV/VNAV NA below -17°C or above 54°C.	

AWOS-3 121.025	TOLEDO APP CON 134.35 317.55	UNICOM 122.8 (CTAF) 0
--------------------------	--	---------------------------------



ELEV 1184	TDZE 1184	1700	3100	HIRED	UFPUY	AVIYE	4 NM Holding Pattern
1339±		*LNAV only		GUCYE 1.7 NM to RW28	2700	281°	101° → 3100
281° to RW28		* 1.1 NM to RW28		1760*	2700	281°	GP 3.00° TCH 40
10 0.6% UP 5000 X 100		1.1 0.6 2.9 NM 5 NM					
		CATEGORY	A	B	C	D	
		LPV DA	1474-1 290 (300-1)		NA		
		LNAV/VNAV DA	1489-1 305 (400-1)		NA		
		LNAV MDA	1580-1 396 (400-1)		1580-1½ 396 (400-1½)		NA
		CIRCLING	1640-1 456 (500-1)		1680-1 496 (500-1)		1680-1½ 496 (500-1½) NA