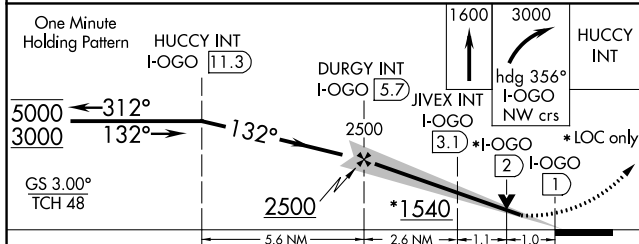
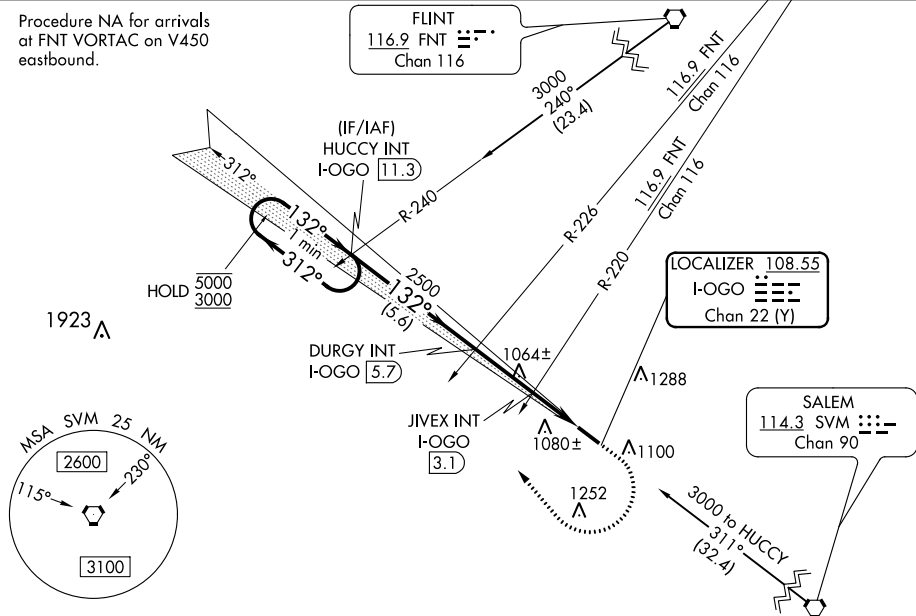


ILS or LOC RWY 13
LIVINGSTON COUNTY SPENCER J HARDY (OZW)

MALSR

MISSED APPROACH: Climb to 1600 then climbing right turn to 3000 heading 356° and I-OGO NW course to HUCCY INT/ I-OGO 11.3 DME and hold.

Procedure NA for arrivals
at FNT VORTAC on V450
eastbound.



CATEGORY	A	B	C	D
S-ILS 13	1162-1/2 200 (200-1/2)			
S-LOC 13	1540-1/2 578 (600-1/2)		1540-1 1/4 578 (600-1 1/4)	
CIRCLING	1540-1 578 (600-1)		1540-1 5/8 578 (600-1 5/8)	1540-2 578 (600-2)
JIVEX FIX MINIMUMS (DUAL VOR RECEIVERS OR DME REQUIRED)				
S-LOC 13	1320-1/2 358 (400-1/2)		1320-5/8 358 (400-5/8)	
CIRCLING	1400-1 438 (500-1)	1420-1 458 (500-1)	1420-1 1/2 458 (500-1 1/2)	1520-2 558 (600-2)

