

WAAS CH 99722 W31A	APP CRS 312°	Rwy Idg TDZE 943 Apt Elev 962	5002 943 962
--	------------------------	---	---

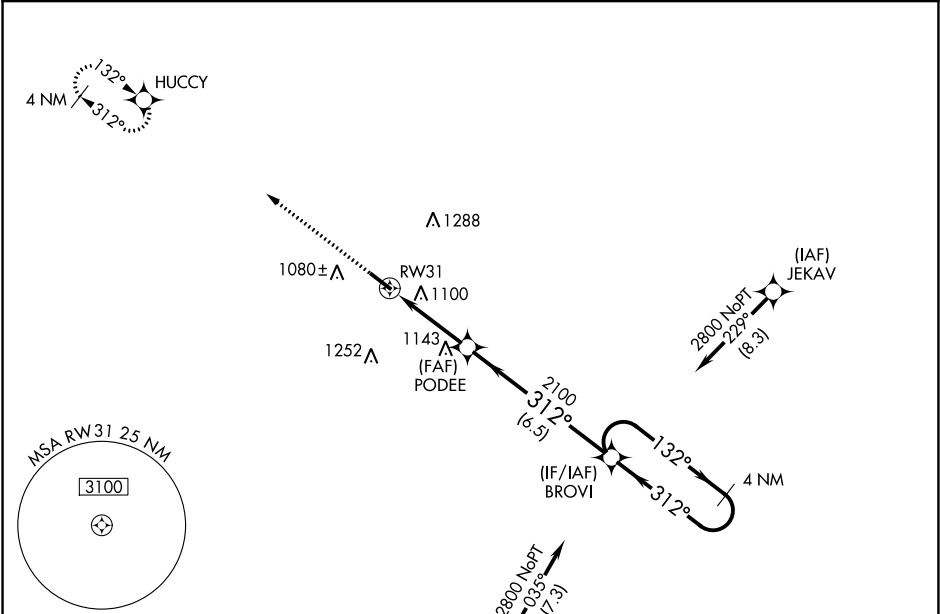
RNAV (GPS) RWY 31

LIVINGSTON COUNTY SPENCER J HARDY (OZW)

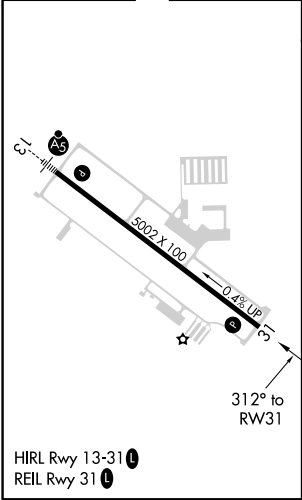
RNP APCH.

<div><div>▼</div><div>For uncompensated Baro-VNAV systems, LNAV/VNAV NA below -16°C or above 54°C.</div></div> <div>MISSED APPROACH: Climb to 3000 direct HUCCY and hold.</div>

AWOS-3 118.875	DETROIT APP CON 132.35 284.0	CLNC DEL 121.725 (GCO)	UNICOM 123.0 (CTAF) 0
--------------------------	--	----------------------------------	---------------------------------



ELEV 962	TDZE 943
----------	----------



3000	HUCCY	VGSI and RNAV glidepath not coincident (VGSI Angle 3.00/TCH 30).			4 NM Holding Pattern
* LNAV only.		PODEE			BROVI
* 1.3 NM to RWY 31		2100			132° → 6000 ← 312° 2800
RWY 31		2100			GP 3.00° TCH 40
1.3		2.2 NM			6.5 NM
CATEGORY	A	B	C	D	
LPV DA	1143-3/4 200 (200-3/4)				
LNAV/VNAV DA	1410-1 5/8 467 (500-1 5/8)				
LNAV MDA	1400-1	457 (500-1)	1400-1 3/8	457 (500-1 3/8)	
CIRCLING	1400-1 438 (500-1)	1420-1 458 (500-1)	1420-1 1/2 458 (500-1 1/2)	1520-2 558 (600-2)	

EC-1, 03 DEC 2020 to 31 DEC 2020

EC-1, 03 DEC 2020 to 31 DEC 2020