

(ZETTR3.ZETTR) 19339
ZETTR THREE DEPARTURE (RNAV)

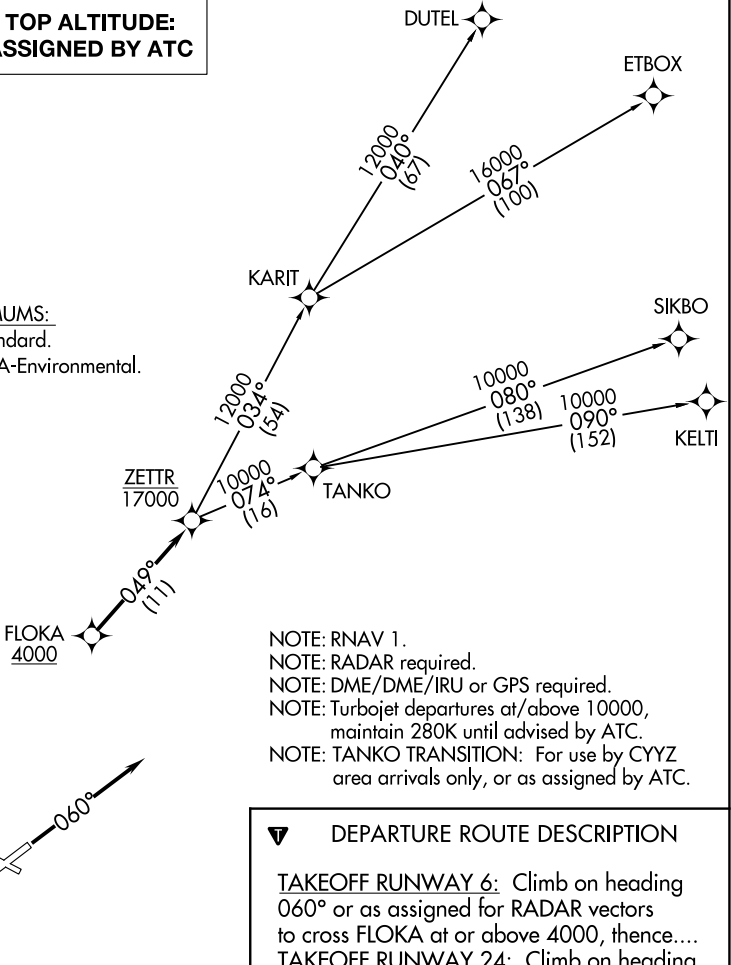
AL-5506 (FAA)

ANN ARBOR MUNI (ARB)
ANN ARBOR, MICHIGAN

ATIS
134.55
CLNC DEL
121.6
GND CON
121.6
ANN ARBOR TOWER ★
120.3 (CTAF)
DETROIT DEP CON
118.95 284.0

**TOP ALTITUDE:
ASSIGNED BY ATC**

TAKEOFF MINIMUMS:
Rwys 6, 24: Standard.
Rwys 12, 30: NA-Environmental.



NOTE: RNAV 1.
NOTE: RADAR required.
NOTE: DME/DME/IRU or GPS required.
NOTE: Turbojet departures at/above 10000, maintain 280K until advised by ATC.
NOTE: TANKO TRANSITION: For use by CYYZ area arrivals only, or as assigned by ATC.

DEPARTURE ROUTE DESCRIPTION

TAKEOFF RUNWAY 6: Climb on heading 060° or as assigned for RADAR vectors to cross FLOKA at or above 4000, thence....
TAKEOFF RUNWAY 24: Climb on heading 240° or as assigned for RADAR vectors to cross FLOKA at or above 4000, thence....

....on track 049° to cross ZETTR at or below 17000, then on (transition). Maintain ATC assigned altitude, expect filed altitude 10 minutes after departure.

DUTEL TRANSITION (ZETTR3.DUTEL):
ETBOX TRANSITION (ZETTR3.ETBOX):
KELTI TRANSITION (ZETTR3.KELTI):
SIKBO TRANSITION (ZETTR3.SIKBO):
TANKO TRANSITION (ZETTR3.TANKO):

NOTE: Chart not to scale.