

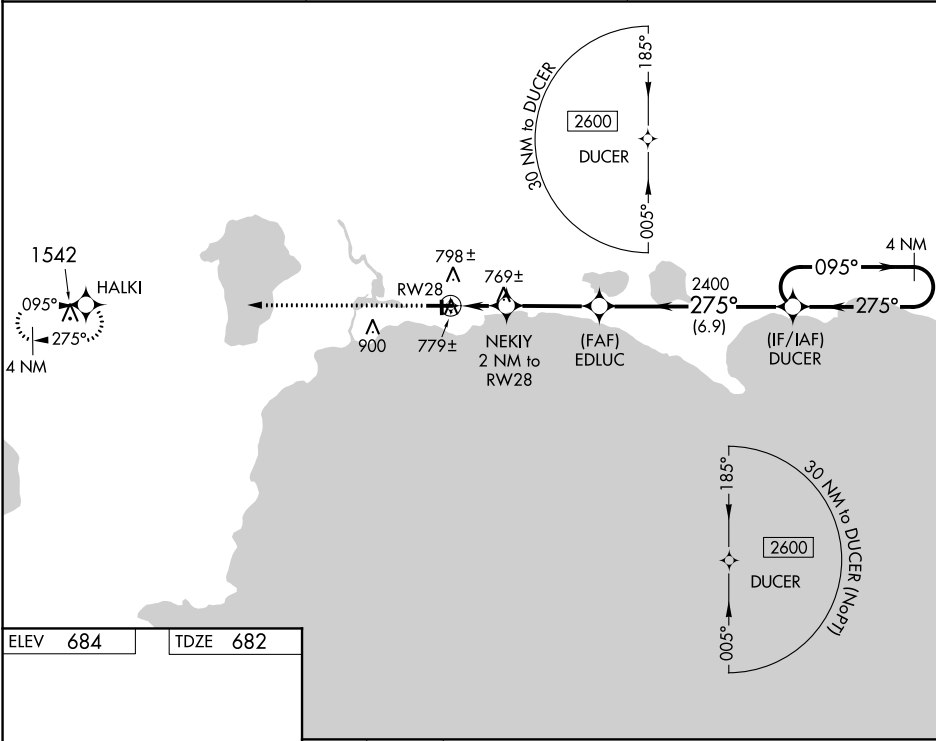
WAAS CH <b>53527</b> <b>W28A</b>	APP CRS <b>275°</b>	Rwy Idg TDZE <b>682</b> Apt Elev <b>684</b>
--	------------------------	---

RNAV (GPS) RWY 28  
SCHOOLCRAFT COUNTY (ISQ)

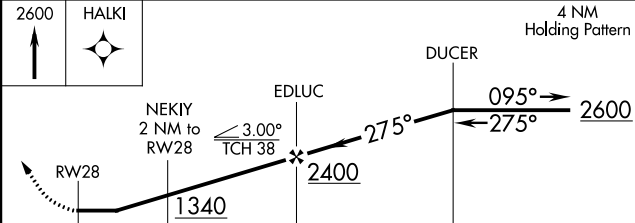
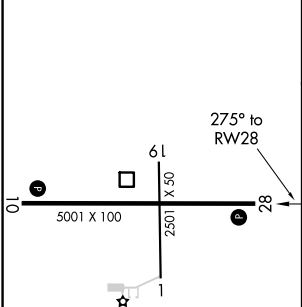
**⚠** When local altimeter setting not received, use Beaver Island altimeter setting and increase all MDA 80 feet, increase LP Cat C and D visibility ¼ mile and LNAV Cat C and D visibility ⅜ mile. When VGSi inop, Straight-In/Circling Rwy 28 procedure NA at night. DME/DME RNP-0.3 NA. Visibility reduction by helicopters NA. Circling to Rwy 1/19 NA at night.

**MISSED APPROACH:**  
Climb to 2600 direct  
HALKI and hold.

AWOS-3 <b>118.775</b>	MINNEAPOLIS APP CON <b>134.6 354.05</b>	UNICOM <b>122.8 (CTAF) 0</b>
--------------------------	--	---------------------------------



ELEV <b>684</b>	TDZE <b>682</b>
-----------------	-----------------



	2 NM		3.3 NM		6.9 NM	
CATEGORY	A		B		C	
LP MDA	1020-1		338 (400-1)			
LNAV MDA	1040-1		358 (400-1)			
CIRCLING	1120-1 436 (500-1)	1140-1 456 (500-1)	1140-1½ 456 (500-1½)	1260-2 576 (600-2)		

REIL Rwy 28 0  
MIRL Rwy 10-28 0

EC-1, 03 DEC 2020 to 31 DEC 2020

EC-1, 03 DEC 2020 to 31 DEC 2020