

WAAS

CH **49206**

W26A

APP CRS

254°

Rwy Idg

5003

TDZE

646

Apt Elev

646

RNAV (GPS) RWY 26

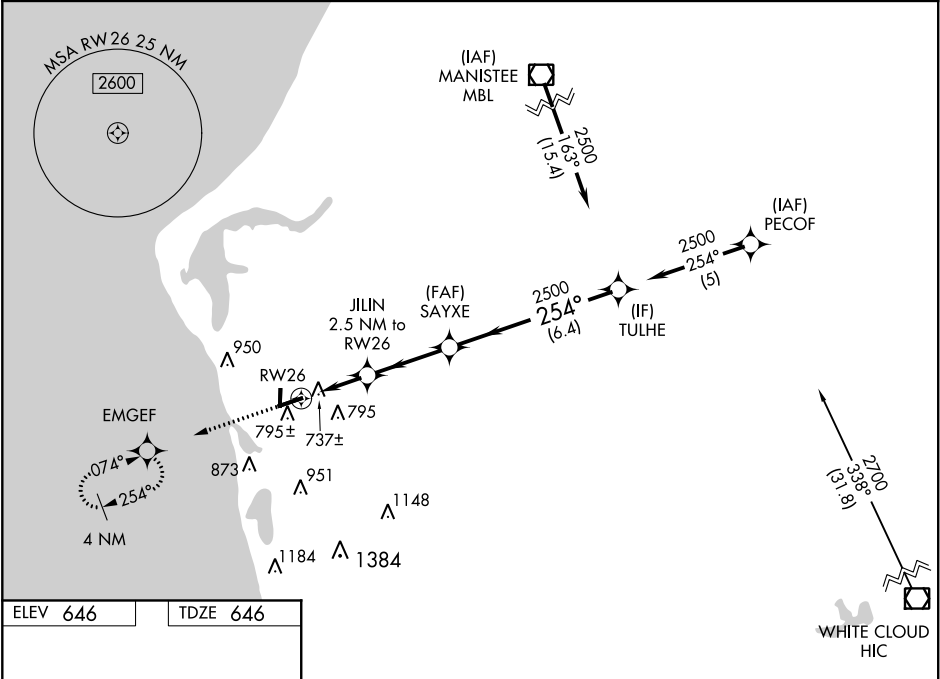
MASON COUNTY (LDM)

RNP APCH.

Circling Rwy 1, 19 NA at night. Rwy 26 helicopter visibility reduction below ¾ SM NA.
For uncompensated Baro-VNAV systems, LNAV/VNAV NA below -16°C or above 54°C.

MISSED APPROACH:
Climb to 2500 direct
EMGEF and hold.

AWOS-3 119.925	MINNEAPOLIS CENTER 120.85 322.35	UNICOM 123.0 (CTAF) 0
--------------------------	--	---------------------------------



ELEV **646**

TDZE **646**

61
3503 X 75
26
8
254° to RW26

REIL Rwy 26 0
MIRL Rwy 8-26 and 1-19 0

2500
↑
EMGEF

VGSI and RNAV glidepath not coincident
(VGSI Angle 3.00/TCH 25).

*LNAV only.

JILIN 2.5 NM to RW26
*1 NM to RW26
RW26
*1480

SAYXE 2500
254°
2500

TULHE
2500
GP 3.00°
TCH 40

1 NM1.53.1 NM6.4 NM

CATEGORY	A	B	C	D
LPV DA		975-1¼	329 (400-1¼)	
LNAV/VNAV DA		1020-1¼	374 (400-1¼)	
LNAV MDA		1000-1 354 (400-1)		1000-1¼ 354 (400-1¼)
CIRCLING	1160-1 514 (600-1)		1200-1½ 554 (600-1½)	1300-2 654 (700-2)