

WAAS CH 90228 W09A	APP CRS 095°	Rwy Idg TDZE Apt Elev	5004 753 754
--	------------------------	-----------------------------	---

RNAV (GPS) RWY 9

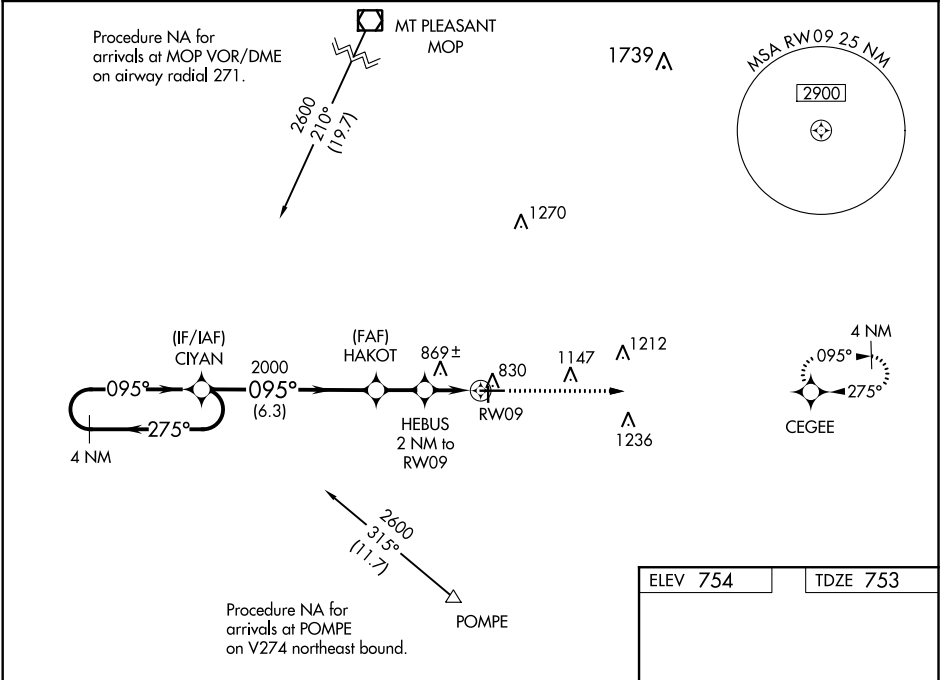
GRATIOT COMMUNITY (AMN)

RNP APCH.

Baro-VNAV NA when using Mount Pleasant altimeter setting. For uncompensated Baro-VNAV systems, LNAV/VNAV NA below -16°C or above 39°C. Rwy 9 helicopter visibility reduction below ¾ SM NA. When local altimeter setting not received, use Mount Pleasant altimeter setting and increase all DA 42 feet and VNAV all Cats visibility ½ mile, increase all MDA 60 feet, and LNAV Cat C and D visibility ¼ mile. VDP NA when using Mount Pleasant altimeter setting.

MISSED APPROACH: Climb to 2600 direct CEGEE and hold.

AWOS-3 124.175	GREAT LAKES APP CON* 126.45 235.625	CLNC DEL 119.25	UNICOM 122.8 (CTAF) 0
--------------------------	---	---------------------------	--



4 NM Holding Pattern

VGSI and RNAV glidepath not coincident (VGSI Angle 3.00/TCH 40).

2600 CEGEE

095° to RW09

GP 3.00° TCH 55

2600

275°

095°

CIYAN

HAKOT

HEBUS 2 NM to RW09

*1.2 NM to RW09

*1440

2000

6.3 NM

1.8 NM

0.8 NM

1.2 NM

*LNAV only

81

5004 X 75

36

3197 X 75

27

CATEGORY	A	B	C	D
LPV DA	1028-1 275 (300-1)			
LNAV/VNAV DA	1156-1½ 403 (500-1½)			
LNAV MDA	1160-1 407 (500-1)		1160-1½ 407 (500-1½)	

REIL Rwy 9 and 27 **0**
MIRL Rwy 9-27 and 18-36 **0**

EC-1, 03 DEC 2020 to 31 DEC 2020

EC-1, 03 DEC 2020 to 31 DEC 2020