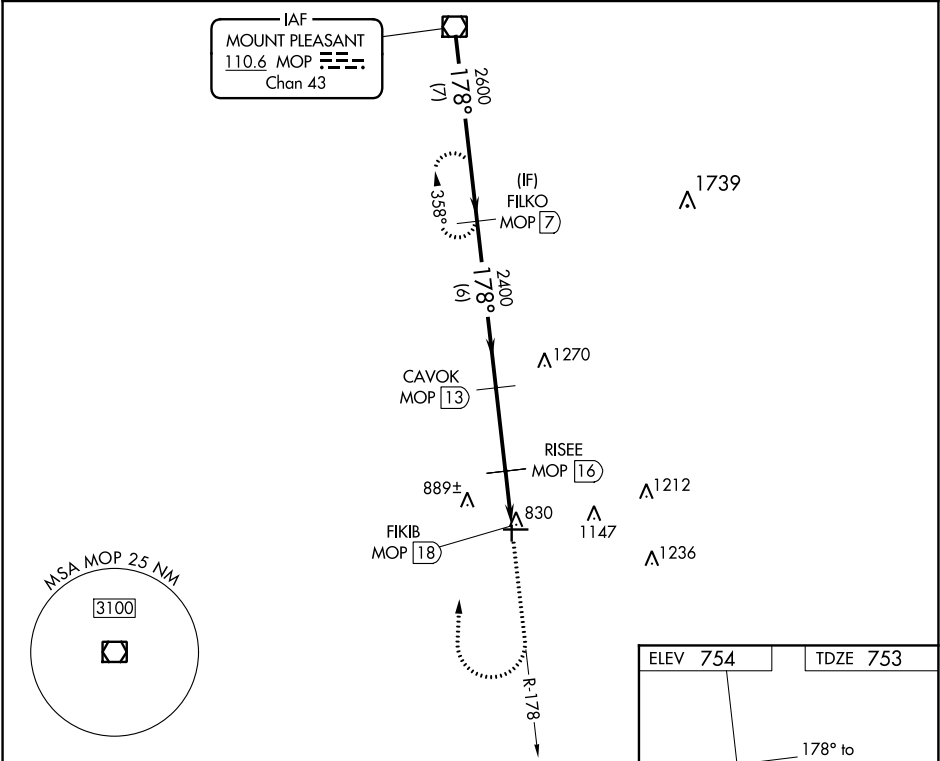


VOR/DME MOP 110.6 Chan 43	APP CRS 178°	Rwy Idg 3197 TDZE 753 Apt Elev 754
---	------------------------	---

VOR RWY 18
GRATIOT COMMUNITY (AMN)

<p>⚠ Night landing: Rwy 18, 36 NA. DME required. ⚠ NA Straight-in Rwy 18 NA at night, Circling Rwy 18, 36 NA at night. Rwy 18 helicopter visibility reduction below 1 SM NA.</p>	<p>MISSED APPROACH: Climb to 1200 then climbing right turn to 2600 on MOP VOR/DME R-178 direct FILKO/MOP VOR/DME 7 DME and hold.</p>
--	--

AWOS-3 124.175	GREAT LAKES APP CON* 126.45 235.625	CLNC DEL 119.25	UNICOM 122.8 (CTAF) 0
--------------------------	---	---------------------------	--



	MOP VOR/DME	FILKO MOP 7	CAVOK MOP 13	RISEE MOP 16	FIKIB MOP 18
	3000	2600	2400	1420	
	178°		3.03° TCH 50		
	7 NM	6 NM	3 NM	2 NM	
CATEGORY	A	B	C	D	
S-18	1140-1	387 (400-1)	1140-1¼ 387 (400-1¼)	NA	
CIRCLING	1180-1 426 (500-1)	1220-1 466 (500-1)	1220-1½ 466 (500-1½)	NA	

