

WAAS CH 97708 W09A	APP CRS 090°	Rwy Idg 4549 TDZE 669 Apt Elev 669
--	------------------------	---

RNAV (GPS) RWY 9

CHARLEVOIX MUNI (CVX)

RNP APCH.

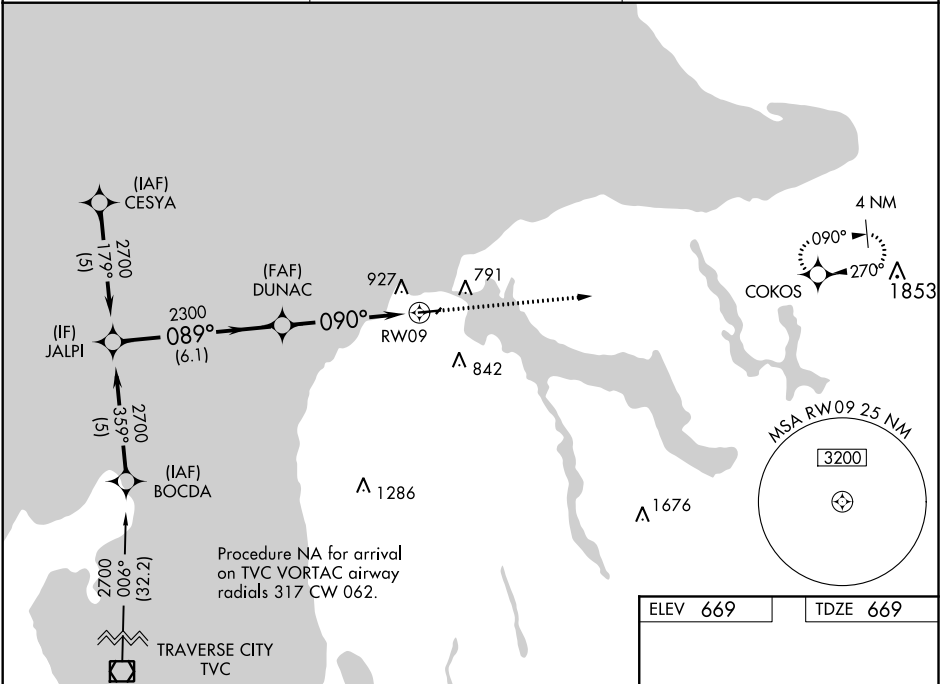
▼

▲

Circling NA to Rwy 4 and 22. Baro-VNAV NA when using Pellston altimeter setting.
For uncompensated Baro-VNAV systems, LNAV/VNAV NA below -16°C or above 54°C.
When local altimeter setting not received, use Pellston altimeter setting: increase LPV DA to 986 feet and all visibilities ¼ SM; increase LNAV/VNAV DA to 1270 feet and all visibilities ¼ SM; increase all MDA 80 feet and visibility Cats C and D ¼ SM.

MISSED APPROACH:
Climb to 3000 direct COKOS and hold.

AWOS-3 120.0	MINNEAPOLIS CENTER 134.6 354.05	UNICOM 122.8 (CTAF) 0
------------------------	---	---------------------------------



JALPI

DUNAC

RWY 09

2700

2300

2000

089°

090°

GP 3.00°

TCH 45

6.1 NM

4.9 NM

VGSI and RNAV glidepath not coincident
(VGSI Angle 3.00/TCH 39).

3000

COKOS

CATEGORY	A	B	C	D
LPV DA	919-¾ 250 (300-¾)			
LNAV/VNAV DA	1203-1½ 534 (600-1½)			
LNAV MDA	1160-1 491 (500-1)		1160-1¾ 491 (500-1¾)	
CIRCLING	1280-1 611 (700-1)		1280-2 611 (700-2)	

ELEV 669 TDZE 669

090° to RWY 09

REIL Rwy 9 and 27 0

MIRL Rwy 9-27 0