

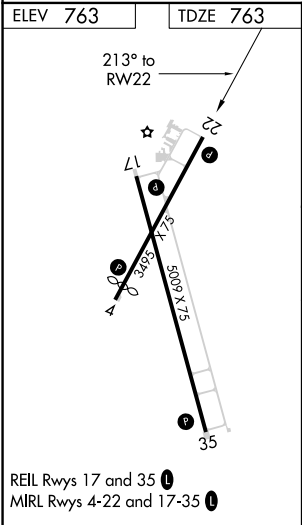
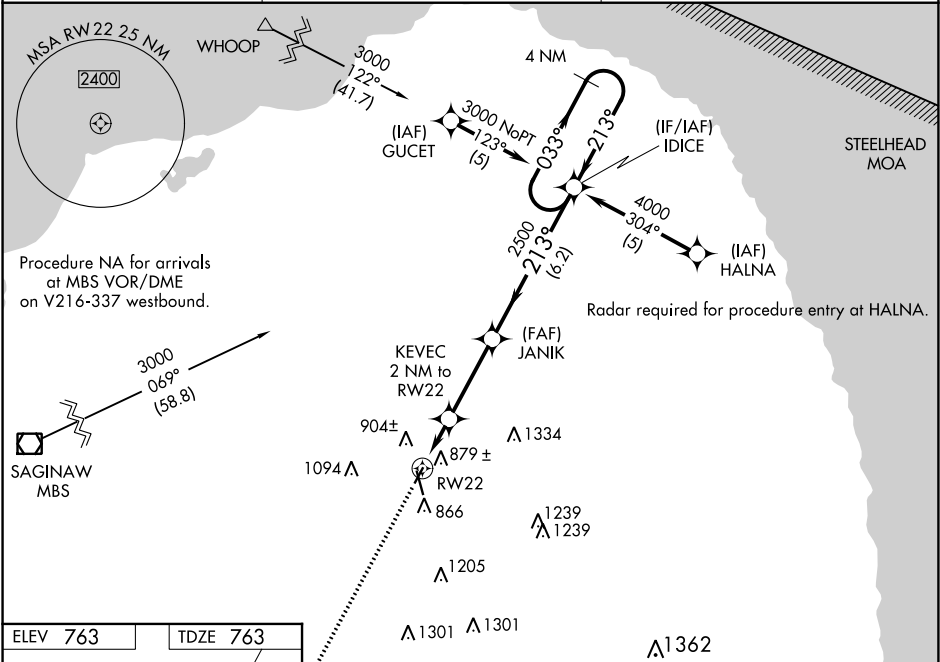
APP CRS	Rwy Idg	3495
213°	TDZE	763
	Apt Elev	763

RNAV (GPS) RWY 22

HURON COUNTY MEMORIAL (BAX)

RNP APCH.	MISSED APPROACH: Climb to 3000 direct CASKU and hold.
▼ When local altimeter setting not received, use MBS Intl altimeter setting and increase all MDA 140 feet; increase LNAV Cat C visibility ½ SM. Procedure NA at night. Rwy 22 helicopter visibility reduction below 1 SM NA.	

AWOS-3 118.6	CLEVELAND CENTER 126.75 348.75	UNICOM 123.075 (CTAF) 0
-----------------	-----------------------------------	----------------------------



3000	CASKU	Visual Segment - Obstacles.	IDICE	4 NM Holding Pattern
↑	✧	JANIK	033° → 3000	
		KEVEC 2 NM to RW22	213° ← 213°	
		RW22	2500	
		1440	6.2 NM	
		2 NM	3.3 NM	
CATEGORY	A	B	C	D
LNAV MDA	1140-1	377 (400-1)		NA