

APP CRS	Rwy Idg	5005
142°	TDZE	1154
	Apt Elev	1158

RNAV (GPS) RWY 14

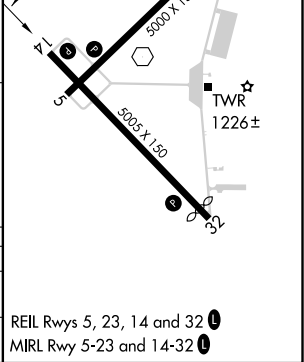
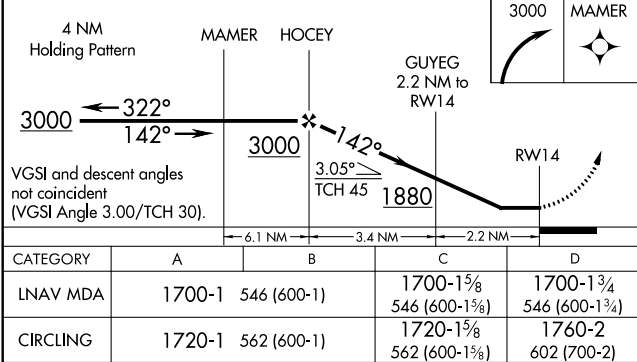
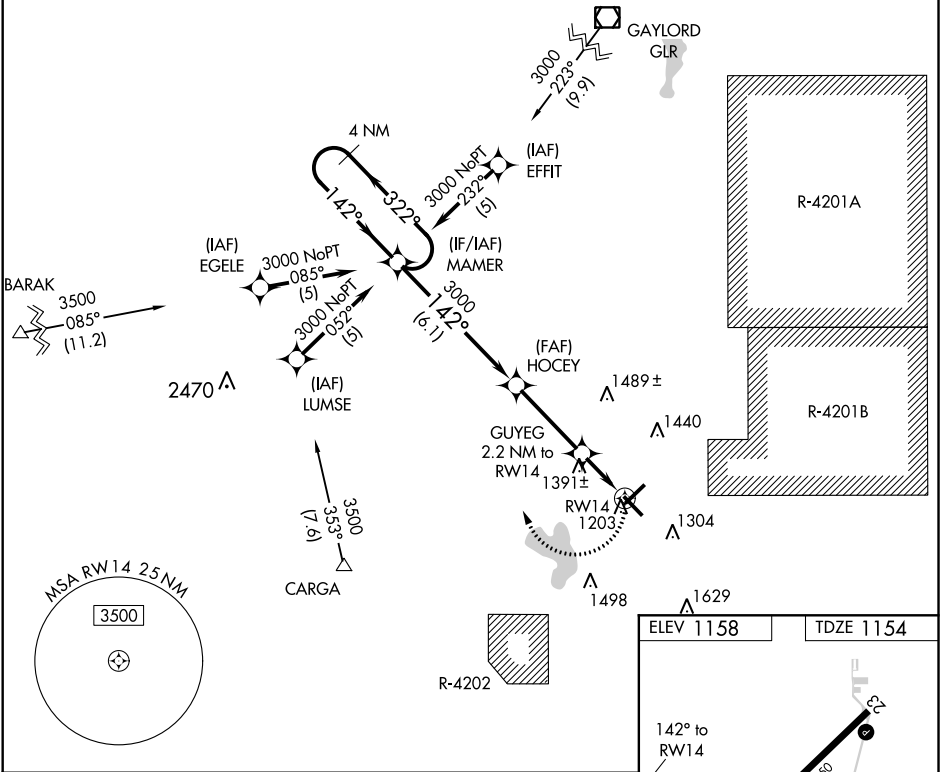
GRAYLING AAF (GOV)

RNP APCH:

- ⚠ Circling Rwy 5, 23, 32 NA at night. Rwy 14 helicopter visibility reduction below ¾ SM NA.

⚠ When local altimeter setting not received use Houghton Lake altimeter setting and increase all MDAs 60 feet and visibility Cat C ½ SM.
- MISSED APPROACH:
Climbing right turn to 3000
direct MAMER and hold.

ATIS 119.075	MINNEAPOLIS CENTER 125.475 269.45	GRAYLING TOWER ★ 126.2 (CTAF) 0	GND CON 121.9
-----------------	--------------------------------------	------------------------------------	------------------



EC-1, 03 DEC 2020 to 31 DEC 2020

EC-1, 03 DEC 2020 to 31 DEC 2020