

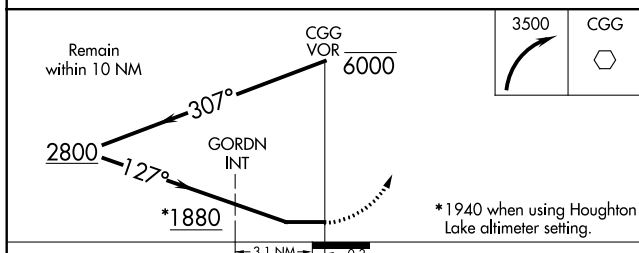
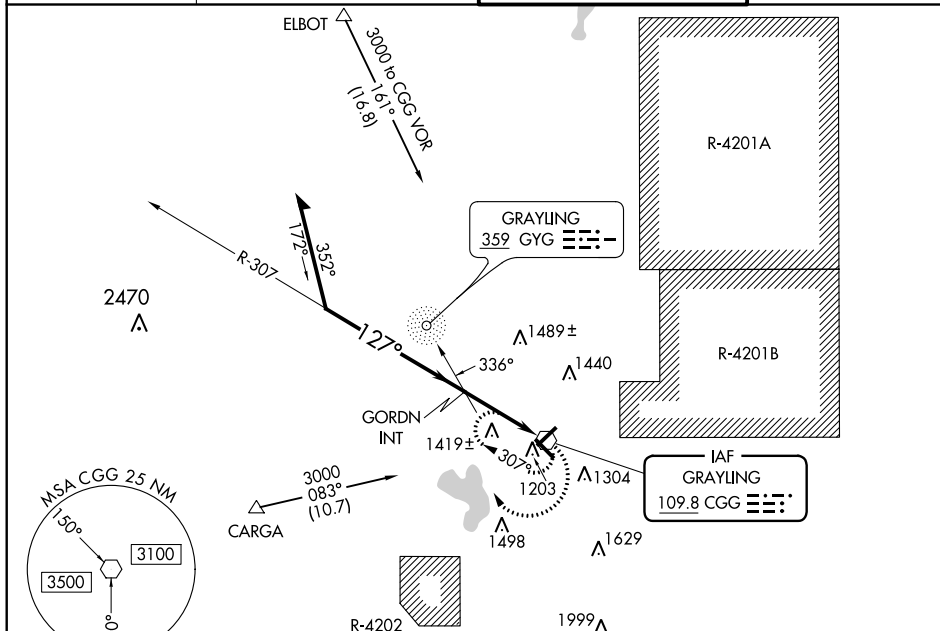
VOR CGG 109.8	APP CRS 127°	Rwy Idg TDZE Apt Elev	5005 1154 1158
-------------------------	------------------------	-----------------------------	---

VOR RWY 14
GRAYLING AAF (GOV)

T Rwy 14 helicopter visibility reduction below $\frac{3}{4}$ SM NA. Circling Rwy 5, 23, 32 NA at night.
A NA When local altimeter setting not received, use Houghton Lake altimeter setting and increase all MDAs 60 feet and visibility S-14 and Circling Cat B/C/D $\frac{1}{2}$ SM and GORDN fix minimums S-14 and Circling Cat C $\frac{1}{2}$ SM.

MISSED APPROACH:
Climbing right turn to 3500
in CGG VOR holding pattern.

<p>ATIS</p> <p>119.075</p>	<p>MINNEAPOLIS CENTER</p> <p>125.475 269.45</p>	<p>GRAYLING TOWER ★</p> <p>126.2 (CTAF) 0</p>	<p>GND CON</p> <p>121.9</p>
-----------------------------------	--	--	------------------------------------



CATEGORY	A	B	C	D
S-14	1880-1	726 (800-1)	1880-2 726 (800-2)	1880-2¼ 726 (800-2¼)
CIRCLING	1880-1	722 (800-1)	1880-2 722 (800-2)	1880-2¼ 722 (800-2¼)
GORDN FIX MINIMUMS				
S-14	1720-1	566 (600-1)	1720-1⅝ 566 (600-1⅝)	1720-1¾ 566 (600-1¾)
CIRCLING	1720-1	562 (600-1)	1720-1⅝ 562 (600-1⅝)	1760-2 602 (700-2)

