

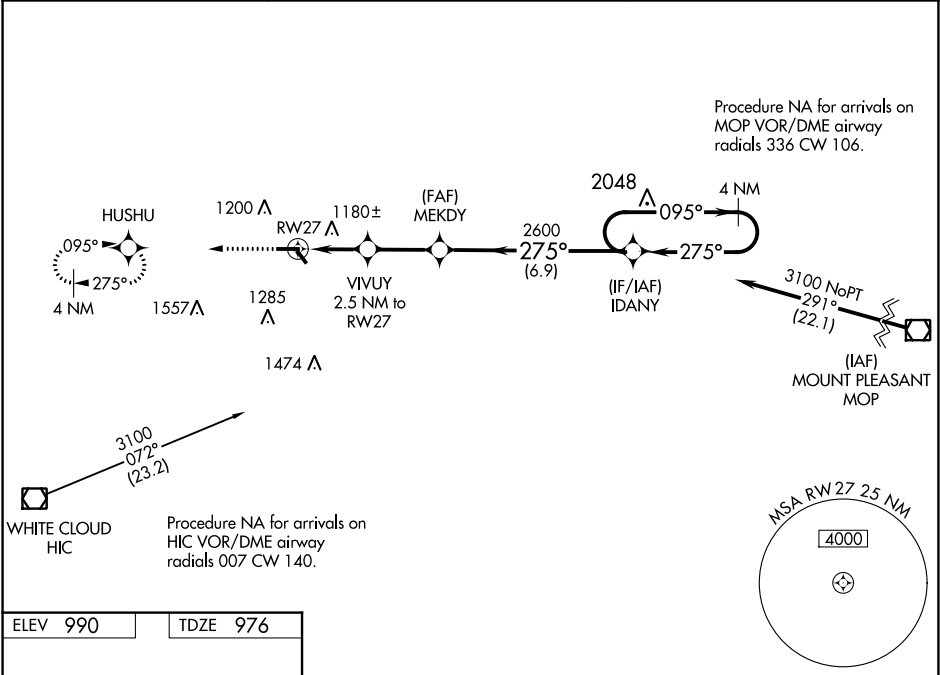
WAAS CH 56238 W27A	APP CRS 275°	Rwy Idg TDZE 976 Apt Elev 990	4300
--	------------------------	---	-------------

RNAV (GPS) RWY 27
ROBEN-HOOD (RQB)

⚠ For uncompensated Baro-VNAV systems, procedure NA below -16°C (4°F) or above 54°C (130°F).
⚠ DME/DME RNP-0.3 NA. Night landing: Rwy 32 NA. Baro-VNAV and VDP NA when using Muskegon altimeter setting. When local altimeter setting is not received, use Muskegon altimeter setting and increase DA 157 feet and all visibilities ½ mile; increase all MDAs 160 feet, LNAV Cat C/D visibility and Circling Cat C ½ and Circling Cat D visibility ¼ mile.

MISSED APPROACH:
Climb to 2900 direct HUSHU and hold.

AWOS-3P 125.875	MINNEAPOLIS CENTER 120.85 322.35	UNICOM 122.8 (CTAF) 1
---------------------------	--	---------------------------------



ELEV 990 TDZE 976

275° to RW27

4300 X 75

1.0% UP

2692 X 75

0.3% UP

REIL Rwy 9 and 27 1

MIRL Rwy 9-27 and 14-32 1

2900	HUSHU	VGSi and RNAV glidepath not coincident (VGSi Angle 3.08/TCH 25).			
*LNAV only		VIVUY 2.5 NM to RW27	MEKDY	IDANY	4 NM Holding Pattern
*1.4 NM to RW27		2600	275°	095°	3100
RW27		1780*	2600	275°	GS 3.00° TCH 40
1.4		1.1	2.6 NM	6.9 NM	
CATEGORY	A	B	C	D	
LPV DA	1176-¾		200 (200-¾)		
LNAV/VNAV DA	1540-2		564 (600-2)		
LNAV MDA	1440-1	464 (500-1)	1440-1¾	464 (500-1¾)	
CIRCLING	1500-1 510 (600-1)	1560-1 570 (600-1)	1700-2 710 (800-2)	1860-2¾ 870 (900-2¾)	

EC-1, 03 DEC 2020 to 31 DEC 2020

EC-1, 03 DEC 2020 to 31 DEC 2020