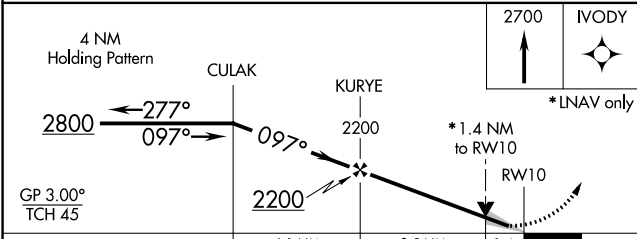
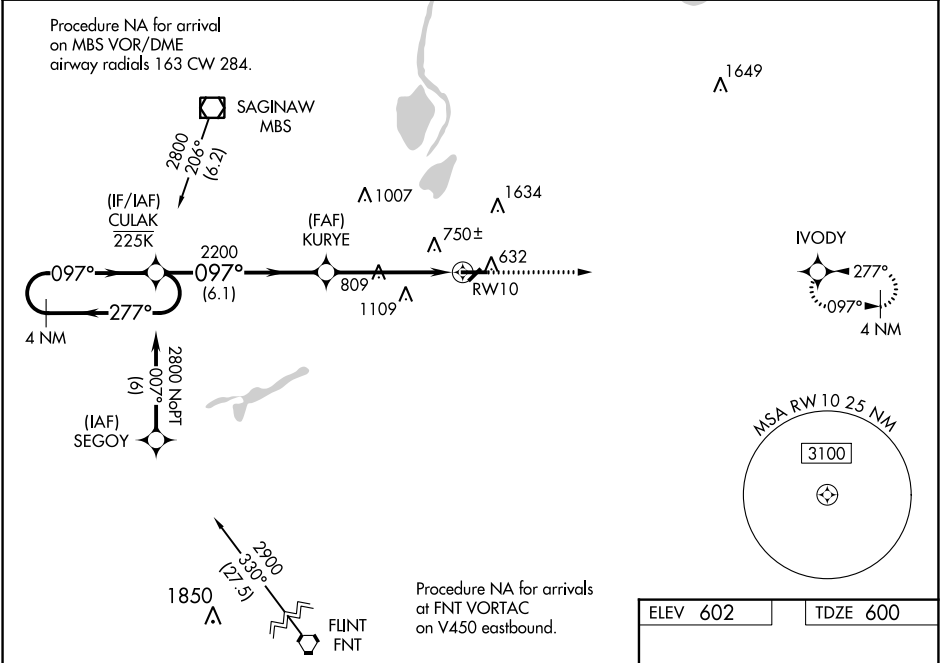


WAAS CH 50200 W10A	APP CRS 097°	Rwy Idg TDZE Apt Elev	5002 600 602
--	------------------------	-----------------------------	---

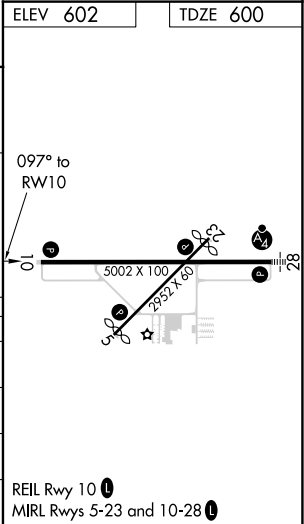
RNAV (GPS) RWY 10
SAGINAW COUNTY H W BROWNE (HYX)

RNP APCH.	MISSED APPROACH: Climb to 2700 direct IVODY and hold.
<div><div>T</div><div>A</div></div> <div>For uncompensated Baro-VNAV systems, LNAV/VNAV NA below -18°C or above 54°C. Circling NA for Cat C north of Rwy 10-28. Circling Rwy 5, 23 NA at night.</div>	

AWOS-3 118.325	GREAT LAKES APP CON ★ 120.95 235.625	UNICOM 122.8 (CTAF) 0
--------------------------	--	---------------------------------



CATEGORY	A	B	C	D
LPV DA	800-3/4	200 (200-3/4)		NA
LNAV/VNAV DA	1018-13/8	418 (500-13/8)		NA
LNAV MDA	1060-1	460 (500-1)	1060-13/8 460 (500-13/8)	NA
CIRCLING	1100-1	498 (500-1)	1460-21/2 858 (900-21/2)	NA



EC-1, 03 DEC 2020 to 31 DEC 2020

EC-1, 03 DEC 2020 to 31 DEC 2020