

VOR/DME MBS 112.9 Chan 76	APP CRS 125°	Rwy Idg TDZE Apt Elev 602	N/A N/A
---	------------------------	---	------------

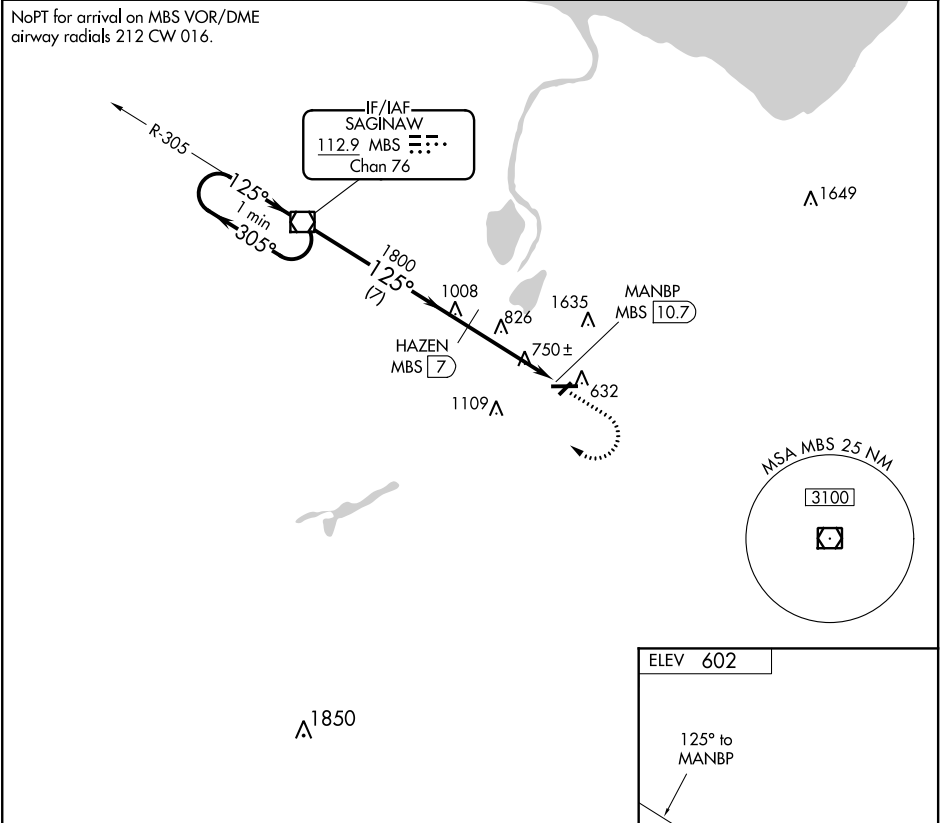
VOR/DME-A

SAGINAW COUNTY H W BROWNE (HYX)

⚠ Circling to Rwy 5/23 NA at night. When local altimeter setting not received, use Saginaw MBS Intl altimeter setting and increase all MDA 40 feet and increase Circling Cat C visibility ¼ SM. Circling NA for Cat C north of Rwy 10-28.

MISSED APPROACH: Climb to 1900 then climbing right turn to 3000 direct MBS VOR/DME and hold.

AWOS-3 118.325	GREAT LAKES APP CON ★ 120.95 235.625	UNICOM 122.8 (CTAF) 0
--------------------------	--	--



One Minute Holding Pattern

1900 3000 MBS

CATEGORY	A	B	C	D
C CIRCLING	1160-1 558 (600-1)		1460-2½ 858 (900-2½)	NA

ELEV 602

REIL Rwy 10 **0**
MIRL Rwy 5-23 and 10-28 **0**